

**Apeer**

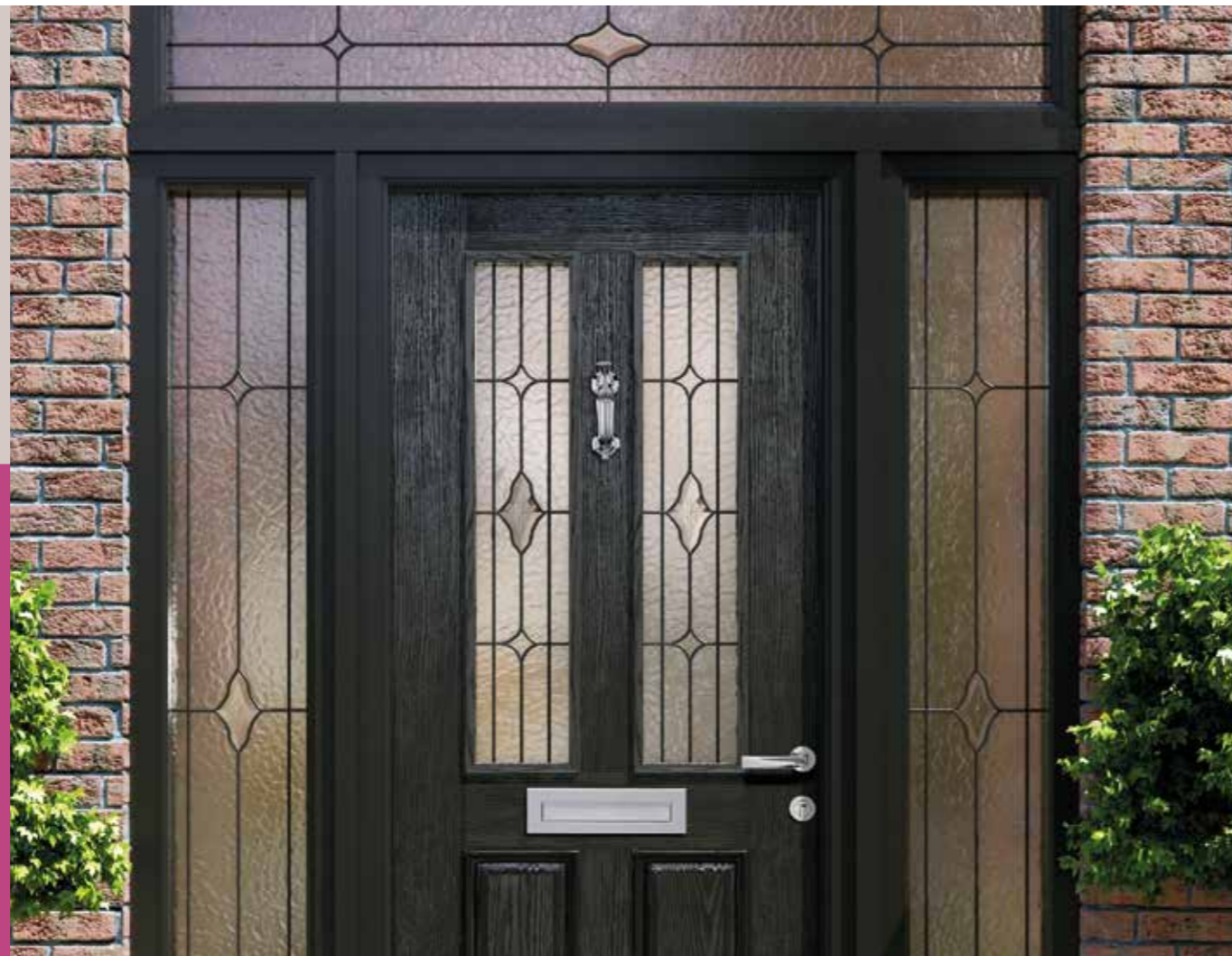
**A**

**++**

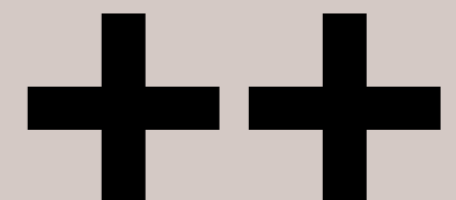


Enhance your home with the ultimate energy saving door.

# Save money on your energy bills



Our mission is to help our customers lower their energy bills in style! We set ourselves a big target: to create an A++ energy efficient door. And we did. There's no other door that comes close.



Apeer 70mm doors are proven to be nearly **7 times** more thermally resistant than other 70mm doors.

All doors are not made the same



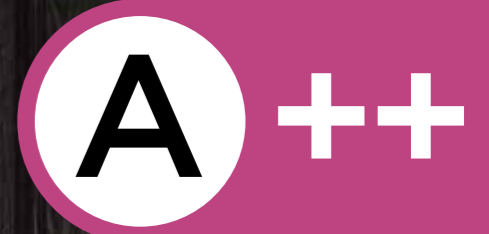
To keep our homes warm we insulate our walls and roof spaces. **So make sure your door has the right insulation as well.**



**Apeer 70mm doors are A++ Rated.**

Search for 'New World Developments' on the BFRC website to see for yourself.

With home heating energy prices skyrocketing, Apeer 70mm is a door for the times we're living through. No matter how we heat our homes – gas, electricity or oil – it's costing us all a lot more. **At Apeer our doors are nearly 7 times more thermally resistant than alternative hollow monocoque doors.**



Here's why an Apeer 70mm is nearly **7 times** more thermally resistant than a hollow monocoque door.

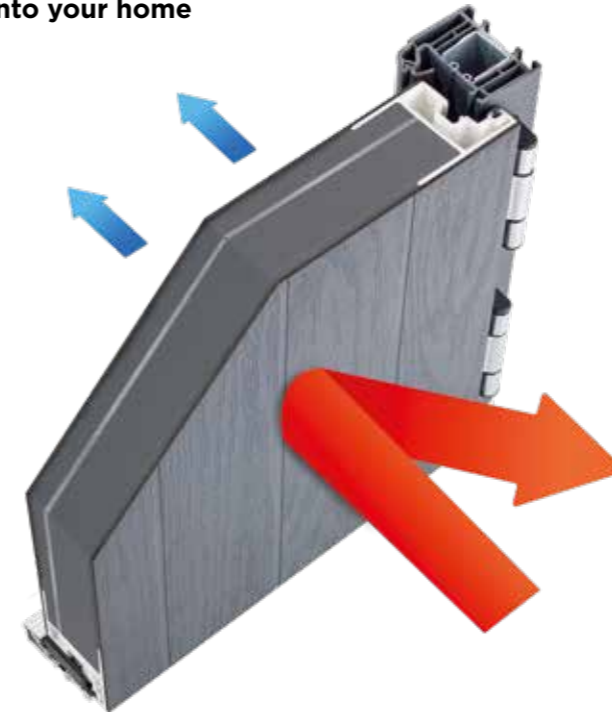
In order to demonstrate the superior thermal resistance of Apeer doors compared to our competitors, we engaged the renowned European testing certifier TÜV Rheinland, to conduct rigorous thermal testing. The results unequivocally confirm that all **Apeer 70mm doors** significantly **outperform** alternative options like **hollow monocoque doors** by nearly 7 times.

This substantial enhancement not only ensures a more comfortable and cosy environment but also translates into real savings on your annual heating bills.

Find out more about our Apeer 70mm doors at [apeer.co.uk](http://apeer.co.uk)

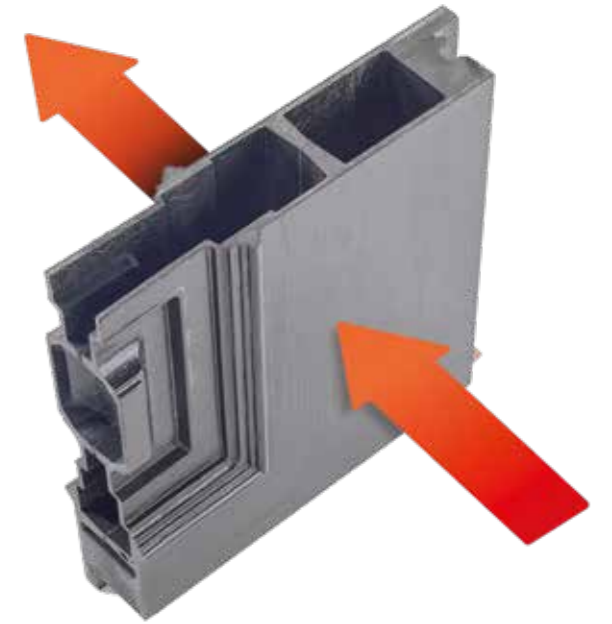
Apeer 70mm is proven to perform

Heat is reflected back into your home



A hollow monocoque door has high heat loss

Heat is lost through the door to the outside



Double sealed rebate creates an internal secondary seal

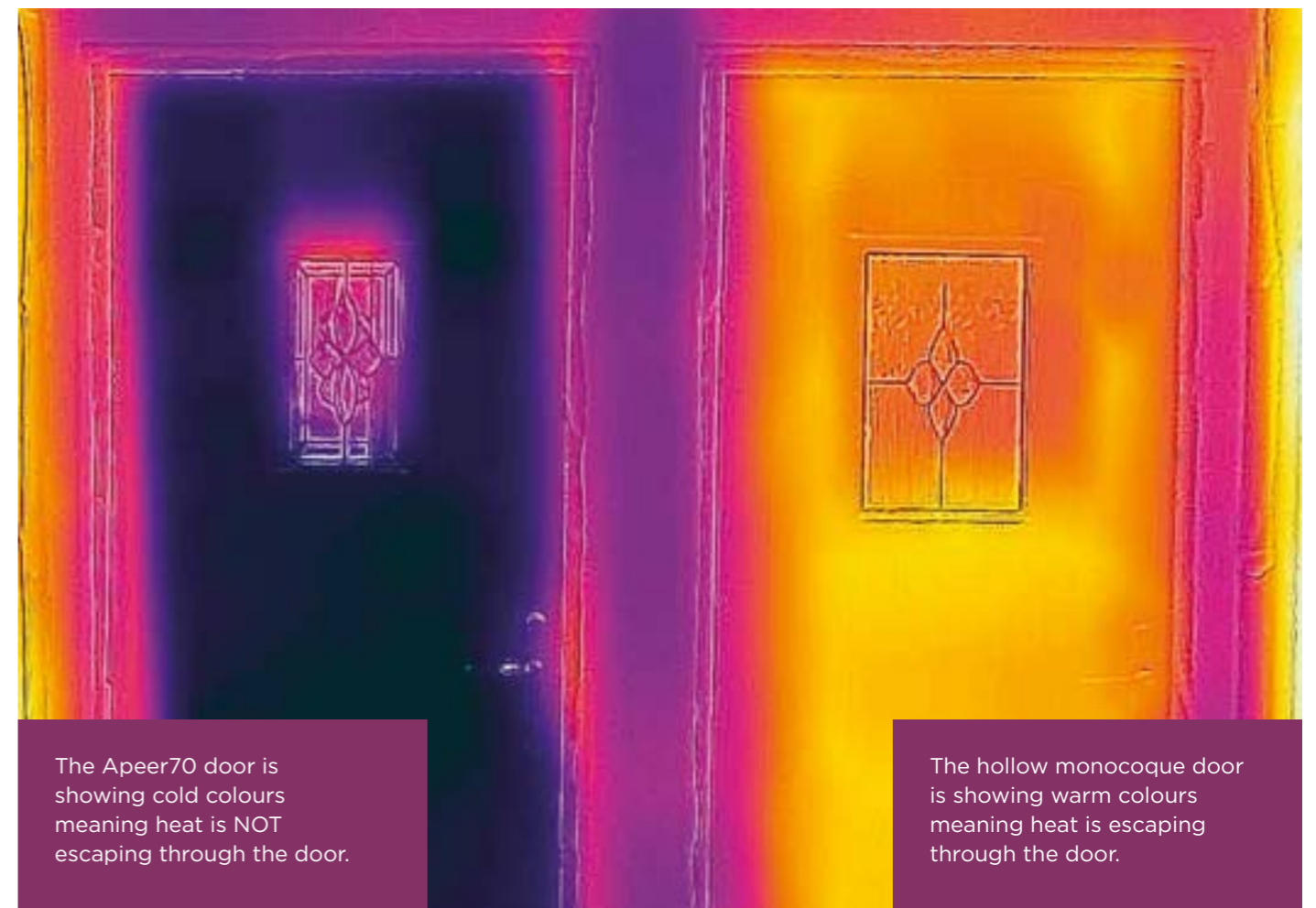
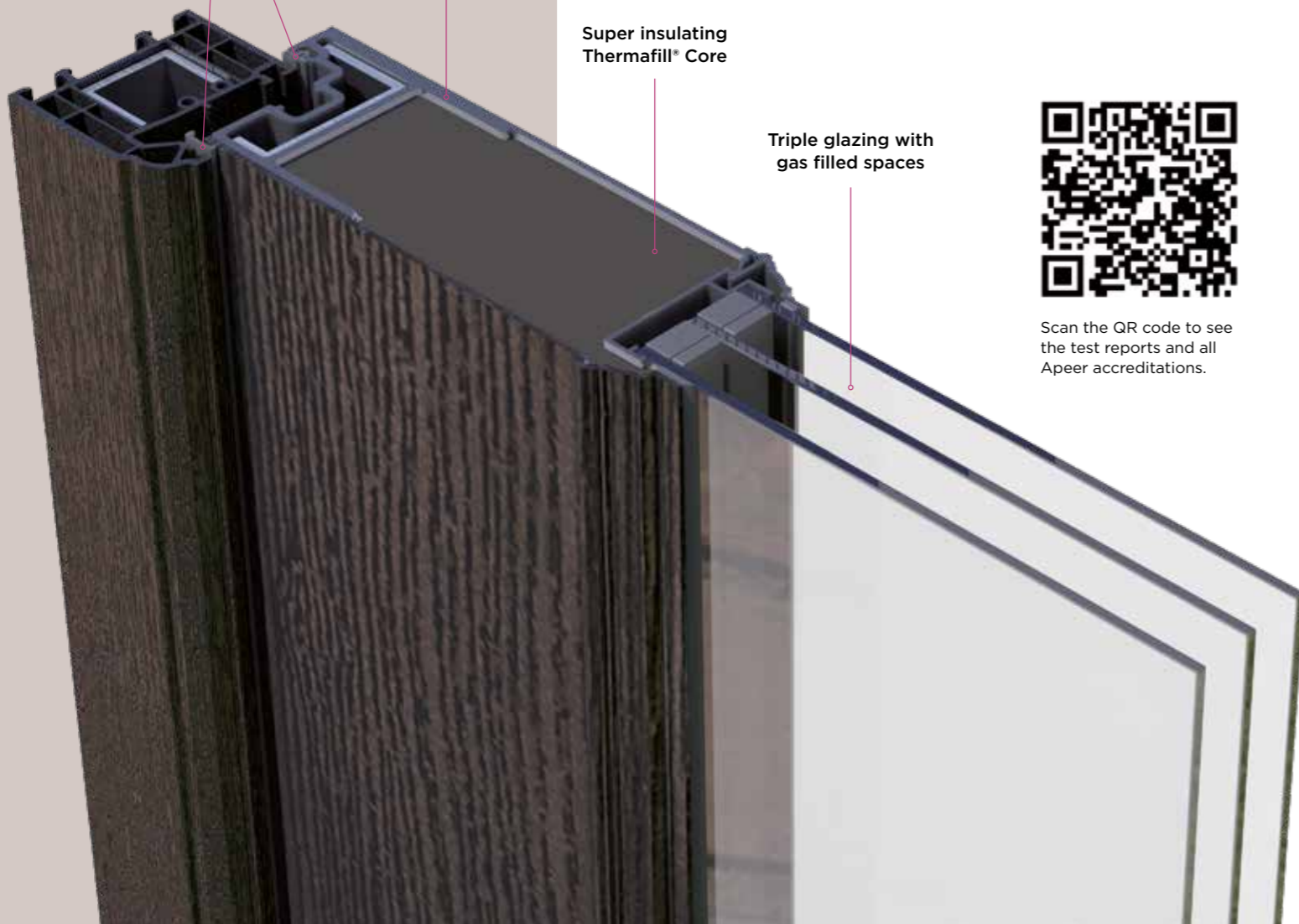
Door and frame set are 98mm thick

Super insulating Thermafill® Core

Triple glazing with gas filled spaces



Scan the QR code to see the test reports and all Apeer accreditations.



The Apeer70 door is showing cold colours meaning heat is NOT escaping through the door.

The hollow monocoque door is showing warm colours meaning heat is escaping through the door.

# What makes an Apeer Door an A++ door?

With home heating energy prices skyrocketing, Apeer is a door for the times we're living through. No matter how we heat our homes – gas, electricity or oil – it's costing us all a lot more. At Apeer we can't do anything to bring that cost of energy down, but we can stop precious heat escaping through the biggest opening in your home.



## We've put all our energy into saving yours.

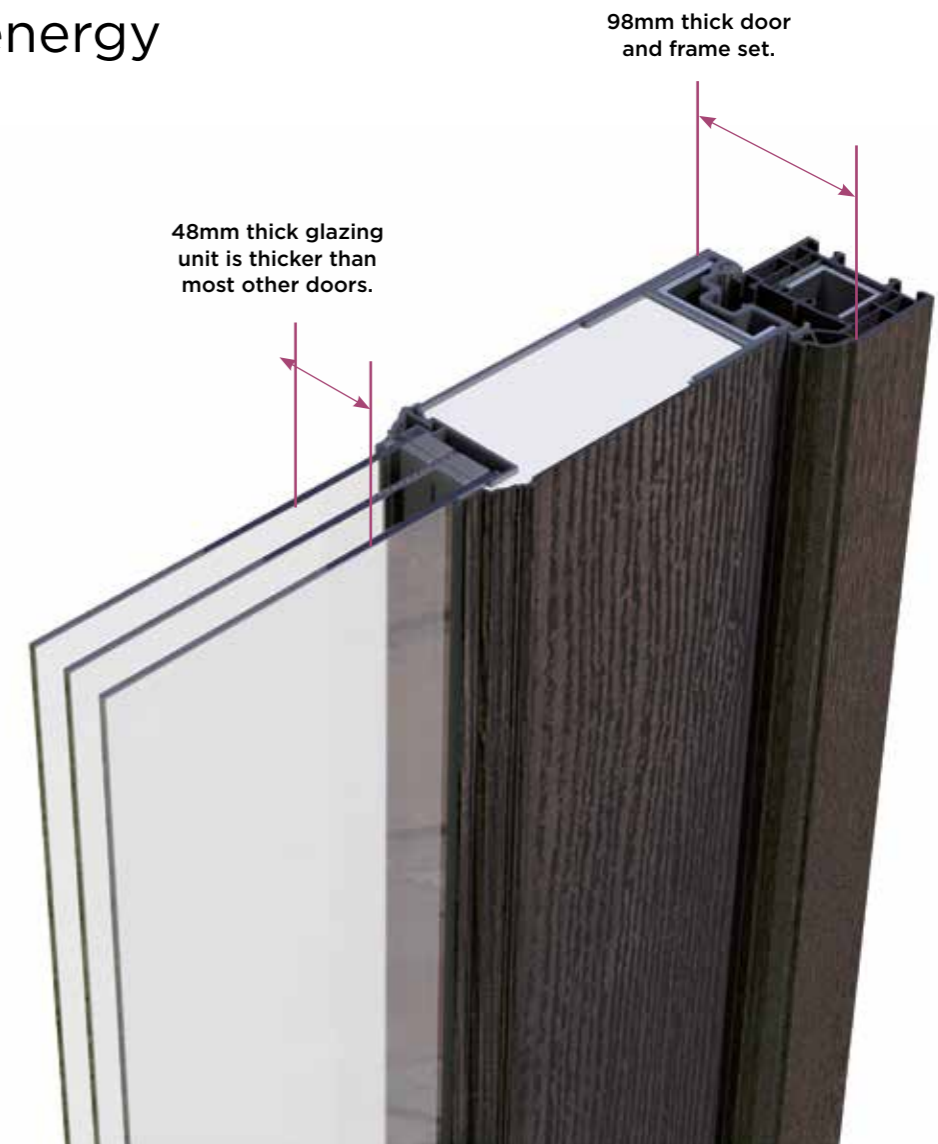
Our high strength, reinforced polyurethane core provides excellent insulation against the worst of mother nature's chills.

Our double rebated twin-seal construction is virtually airtight by creating an internal secondary seal.

Along with our 70mm super strong core, glass elements are triple glazed for extra insulation. We even gas-fill them for extra performance.

The unique multi-chamber, steel reinforced construction is an awesome insulator – keeping cold weather outside where it belongs.

**A++ doors are an optional upgrade.** To achieve **A++** we place a sheet of low emissivity, energy saving Low E Glass either side of our triple glazing unit, with our decorative glass in the middle. Note obscure glass is not available in A++ doors



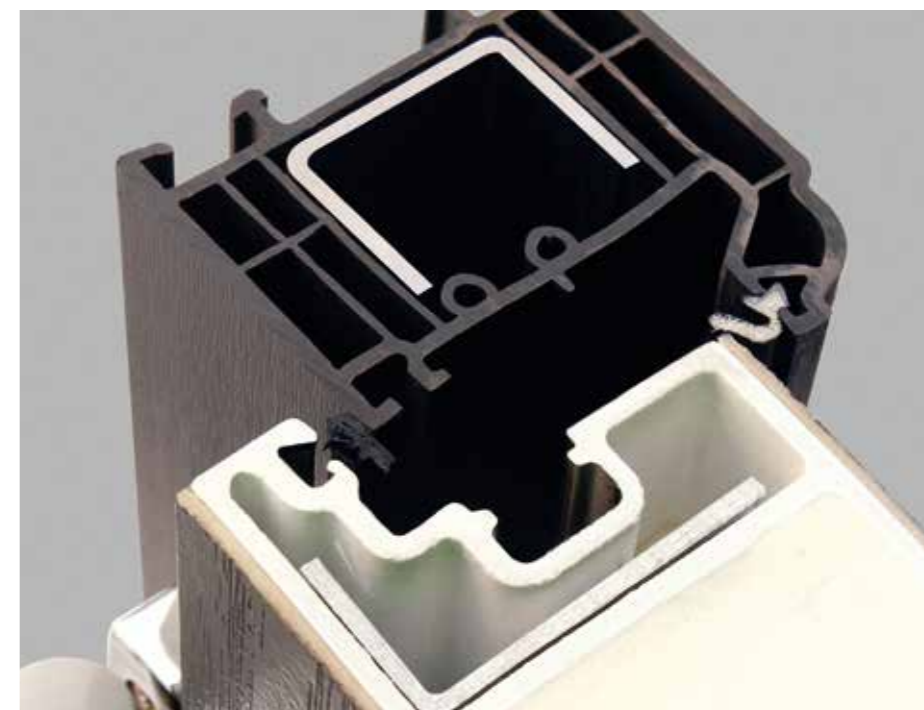
Our doors are at their best when the weather is at its worst.

For all you know, it could be blowing a gale outside, lashing rain or hailstones. Maybe all three at once. But you can't hear the wind's howl or feel the temperature drop. That's because you have an Apeer front door. Triple glazed, double rebated and twice the thickness of most others, it effortlessly keeps mother nature's wildest tantrums at bay.



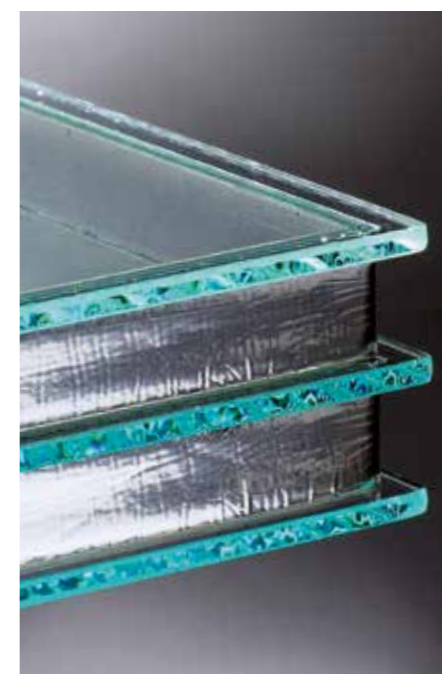
VIRTUALLY AIRTIGHT

Our double sealed rebate is virtually airtight by creating an internal secondary seal.



EXTRA INSULATION

Along with our 70mm super-strong, highly insulating polyurethane core, glass elements are triple glazed for extra insulation. We can even gas-fill them for improved thermal performance.



Glazed units are also available with Low E glass and can be gas filled to offer improved thermal performance. \*Low E glass is only available in clear.

GOOD FOR THE PLANET. EVEN BETTER FOR YOUR WALLET.

Having one of the world's most energy efficient doors is a smart decision for wise heads. Sealing heat in while keeping cold out, they are A++ Rated by independent testers and far exceed the industry benchmark. By keeping more heat in your home, you'll keep more cash in your wallet.



Door Corellia APW2 with RG160 glass

# magic WREATH holder



Only available on Apeer Doors, the magic wreath holder uses hidden magnets, meaning you can attach a new wreath to your door in seconds. So you can change your wreath as often as you change your mind.

Here's the magic touch!

The built-in magnets are completely invisible because we set them within the core of the door. All you have to do is attach the magnet kit to your wreath and hey presto. It's really that simple!



DOUBLE STRENGTH

The door magnets are located at 2 points for extra strength. This means you can have a wreath at a 'proud as punch' 350mm diameter.



FREE WREATH KIT

We give you a free wreath kit so you can hang your fav wreath as soon as your door is installed.



PREVENT SCRATCHING

There are attachable magnets and rubber dots in every wreath kit which prevent movement on windy days and scratching on your door.

SEE FOR YOURSELF!

Scan the QR code to visit [apeer.co.uk/magicwreathholder](http://apeer.co.uk/magicwreathholder) and watch the video.







Apeer anti-burglary cylinder snap guarantee

£20000

### You're in safe hands.

We've thought of everything that can go wrong with your door. Then made sure it won't. From police-approved locks to high-resistant frames, you're in safe hands.



Anti-burglary cylinder snap guarantee in conjunction with Yale and Ultion, if registered within 28 days of purchase with Yale or Ultion, and inline with the T&Cs.



### A great night's sleep.

Rest easy - our doors are as secure as they come. Good to know, whether you're tucked up at home or away for the night.

Every Apeer door comes with a multi-point locking system as well as a super-strong, highly insulating polyurethane core that far exceeds all Police-approved security standards.



# Strength from within



Inside every Apeer 70mm door there's a super-strong steel and metal reinforcing that forms part of the highly insulating polyurethane core. And with a vertical steel bar running top to bottom along the inside edge, our doors far exceed Police-approved security standards.

Extremely strong vertical steel reinforcing bar adds rigidity and security.



Super-strong, metal reinforced, highly insulating polyurethane core.



## Yale SensCheck™ Sensors put you in control of your home security.

Using SensCheck™ Sensors, you can check to see the status of your home, from anywhere, anytime.

Yale SensCheck™ Sensors are simple to install in compatible smart doors. Monitor the status of your doors and windows from anywhere at any time via the Yale Smart Living Home App. Receive notifications and tamper alerts straight to your smartphone, or chime notifications when the status of your door or windows change.

**Yale**



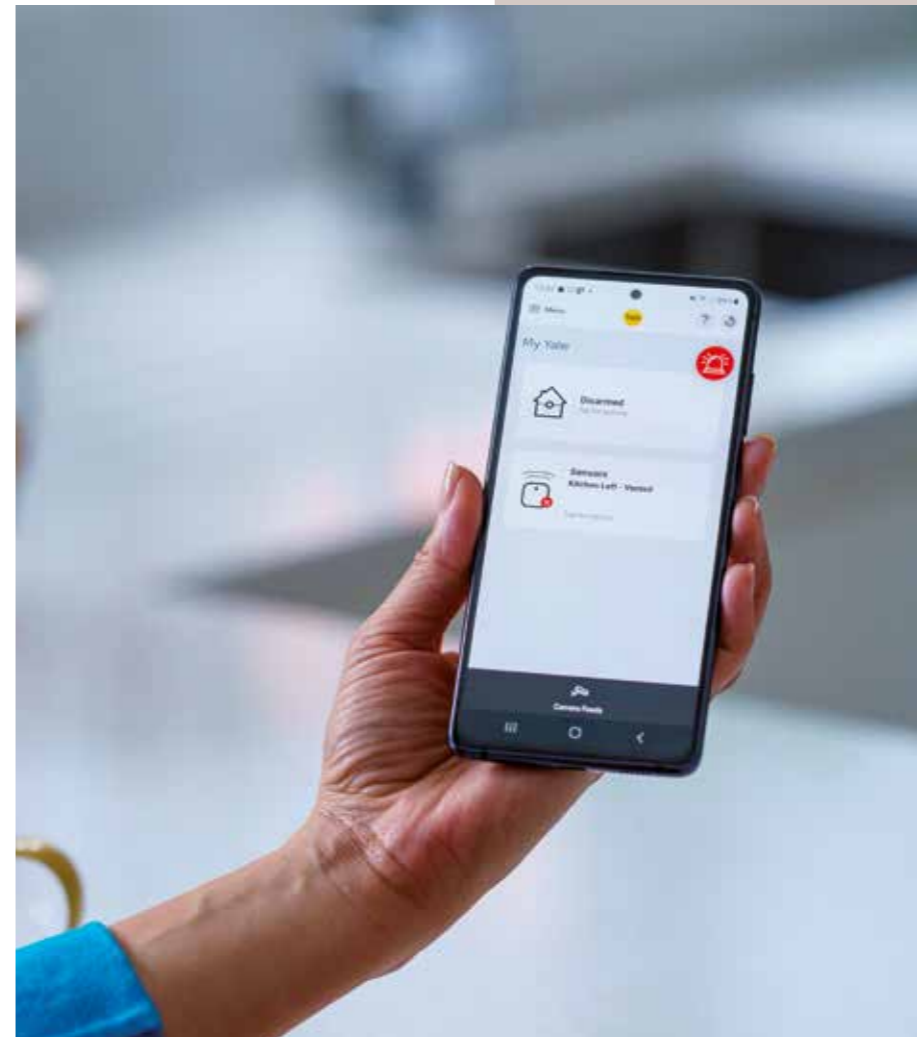
Check the status of your doors and windows with your voice.

Integration with Amazon Alexa and Google Assistant makes it even easier to check the status of your home.

Simply ask, '...is the back door locked' or '...is the front door closed', and your voice assistant can tell you in real time if you've locked your door or window, giving you total peace of mind.

Integration with Philips Hue means your lights will flash once when alarm is armed, or disarmed. It can also act as a visual deterrent alongside notifications and audible alarm from the Sync Hub.

Senscheck must be specified at the time of order and it cannot be fitted once the door is installed

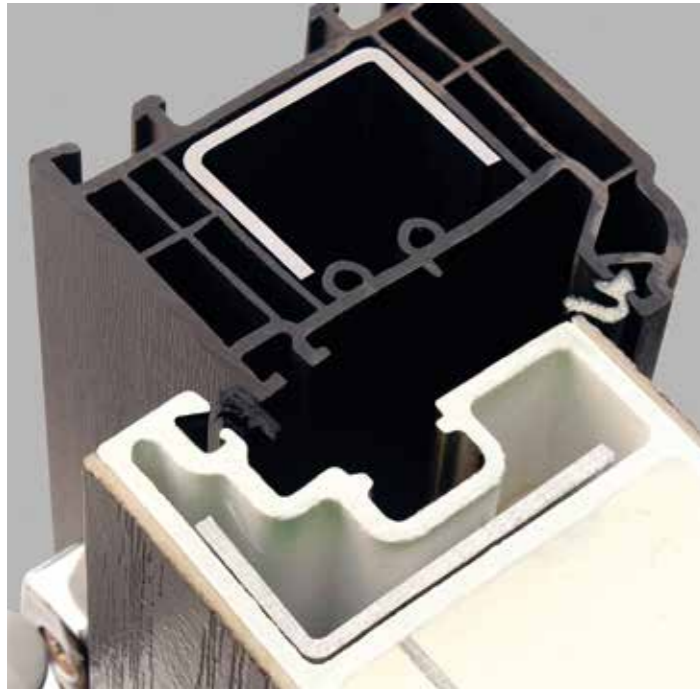


**Benefits of SensCheck™ include:**

- Sensor status notifications and tamper alerts
- Geo-fencing notifications
- Part Arm functionality
- Chime notifications
- Integration with Amazon Alexa, Google Assistant and Philips Hue
- BSI IoT accredited
- Ability to upgrade to full Yale Smart Security System



Please note Apeer only supplies the lock as Senscheck ready and all additional equipment and fittings must be purchased separately from Yale.



## We've got your back. And your front.

Install an Apeer door and you'll have the weight of our entire design team and security specialists protecting you and your home from intruders. Our doors comfortably exceed all industry standard impact and cut-through tests.

Secured by Design doors must be ordered with laminated glass.



Toughened, triple glazing housed in reinforced mouldings with the optional extra of laminate glass for optimum security.



Extremely strong vertical steel reinforcing bar in our doors adds rigidity and security.



A strong coupling bar adds strength and stability.



Multi-point Yale locking system features two rollers, three hooks, two deadbolts and a latch. It secures the door from top to bottom.

Hardened steel hinge bolts make it virtually impossible to force open our doors or lift them off their hinges.

In order to ensure the best quality accessories are used on Apeer doors, New World reserves the right to replace any of the above options as required. Hardware comes with manufacturer's warranty. Please note the high level automatic lock is not suitable for all users and we recommend you check with your supplier before final order sign off.

# You pick the colour, we match it.

If one of our 27 colours isn't exactly what you're looking for, our manufacturing process enables you to match your door to most colours. Simply bring along a RAL or BS colour reference and we'll match it.



Door Endor ACDQ2 with RG158 in door, RG151SL in Sidepanels in Porcelain Blue



Door Hayton SFG20 with RG166 in door, RG166SL in Sidepanels in Green Mist



Door Witton ACDM2 with RG150 in door, Minster in Sidelights in Dark Red



Door Corellia APW2 with RG160 in door, RG151SL in Sidepanels in Agate Grey

# Check out our standard and premium colour palettes.

## LOW MAINTENANCE

To keep your Apeer door looking great, gently wipe down your door with warm soapy water and a soft cloth.

### STANDARD COLOURS



### PREMIUM COLOURS



Metallic Colours are not available. There is an extra charge for Premium and RAL/BS colours. We may not be able to match all RAL/BS colours. 5 year guarantee on Premium Colours

Every effort has been made to reproduce the colour of our Apeer doors and the coloured film in the decorative glass designs. However, printing constraints will give rise to some colour deviation. For exact colour matching please request a colour sample from your approved supplier before purchase. Please note the grain on the GRP Apeer door does not replicate the grain on the frame as it is a PVC foil. The grain and colour on the Oak and Rosewood doors are not an exact match to the Oak and Rosewood PVC frames.



# Paint Warranty

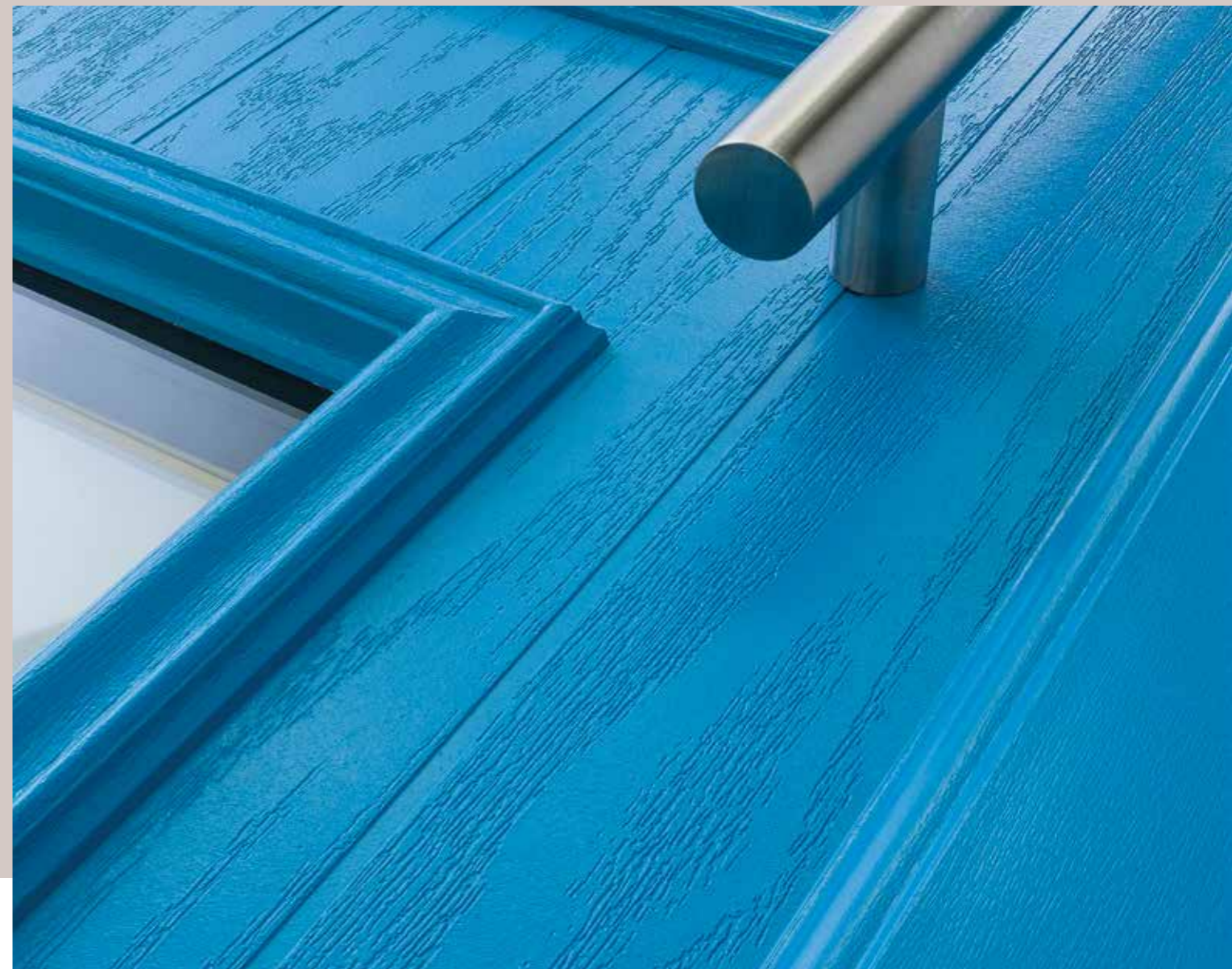
Apeer doors come with a **10 year paint warranty** meaning your door will look great for many years to come.

Although our doors look like natural wood, they're made from a robust composite material. The colour is hard-wearing, low maintenance and is considered the best automotive grade paint from the world's largest paint supplier, Sherwin Williams\*.



Free with every Apeer door: an extra day's holiday each year.

Because you never have to strip, sand or paint an Apeer door. Ever. You get extra time off - that rare sunny day you'd normally spend refurbishing your flaky, peeling door.





## 10 Year Anti-Bow Warranty

Exterior wooden doors can bow by up to 7mm when external and internal temperatures vary. Apeer doors are 60% thicker than other doors in the market and have a GRP and steel reinforced door sash with a double rebated construction. With 7 layers of interwoven fibreglass skins for enhanced strength and durability, Apeer Doors will always retain their shape and stay fully operational\*.



The solid 'thwump' when you close an Apeer door sounds like no other.

It's a sound that signals superior construction, a reinforced frame, virtually airtight seals and completely wood free. Which is why we can bring you an industry first, **10 Year Anti-Bow Warranty** so you know that your Apeer door will perform for years.



\*Contact Apeer for details on terms and conditions on the anti-bow warranty and door care maintenance guidelines



## Extra wide doors, perfect for accessibility

Wider than our standard doors, our accessible doors are available up to 1087mm wide, allowing ample room for wheelchairs, walking aids and many battery-powered mobility scooters.



All doors with code ACD are extra wide.



Door Hoth ACDG3 with RG155 in door, RG21SL in sidepanels in Black



Door Hoth ACDG3 with RG154 in door, RG150SL in Sidepanels in White



Accessible MDS70 threshold including ramp

The glazing trim on the extra wide ACD traditional doors has been designed to protrude out from the door, and is different to the finish on our standard (AP) doors.





## TRADITIONAL COLLECTION

Elegantly timeless,  
the Apeer Traditional  
Collection is designed  
to enhance homes with  
traditional good looks.

# Rowton

Door APM2, Glass BO508\*  
Shown in Black

**A++**

\*Our exclusive, energy efficient A++ rating is an optional upgrade on the door only and is not available with obscure backing glass.



Furniture Shown: Karcher Handle, Doctors Knocker and Architectural Push-in Letterplate all shown in Chrome. \*Glass design shown with Minster backing glass.

## Amazing Glazing

**Add a personal touch with bespoke, handcrafted glass.**

You've chosen the door style and picked a colour that perfectly complements your home. Now for the finishing touch: glass designed by you and handcrafted by our in-house artisan glaziers.



Glass Code FT14  
Colour Steel Blue

**A++**



Glass Code BO556  
Colour Chartwell Green

**A++**



Glass Code BO500  
Colour Cream

**A++**

Door APM2\*, Glass GR1  
Shown in Light Pink (RAL 3015)

GR1 glass has been designed by our inhouse glass designers and any imprints on the film are a natural part of the handcrafted process.



**A++**

Furniture Shown: Sweet Handle, Sweet Knocker, Sweet Letterplate all shown in Rose Gold. \*Glass design shown with Minster backing glass.

Every effort has been made to reproduce the colour of our Apeer doors and the coloured film in the decorative glass designs. However, printing constraints will give rise to some colour deviation. All Apeer 70mm doors are triple glazed as standard. Please note the grain on the GRP Apeer door does not replicate the grain on the frames as it is a PVC foil. Sidelight and toplight designs will depend on sidelight and toplight final sizes and may vary from design shown. Coloured film in glass designs is not an exact match to the door colour.

# Witton

Door ACDM2, Glass SB121  
Shown in Agate Grey



Door ACDM2, Glass RG16, Sidelight Glass Minster  
Shown in Anthracite Grey



Door ACDM2, Glass RG151, Sidelight Glass SB26  
Shown in Dark Red



Door ACDM2, Glass RG150, Sidelight Glass Minster  
Shown in Dark Red



Door ACDM2, Glass RG21, Sidepanel Glass RG21SL  
Shown in White



Furniture Shown: Karcher Handle, Doctors Knocker and Architectural Push-in Letterplate all shown in Chrome.

Every effort has been made to reproduce the colour of our Apeer doors and the coloured film in the decorative glass designs. However, printing constraints will give rise to some colour deviation. All Apeer 70mm doors are triple glazed as standard. Please note the grain on the GRP Apeer door does not replicate the grain on the frames as it is a PVC foil. Sidelight and toplight designs will depend on sidelight and toplight final sizes and may vary from design shown. Coloured film in glass designs is not an exact match to the door colour.

RG glass designs are only available in the door styles shown and are not available on other door styles. Matching fully glazed sidelights are not available for RG glass, some RG glass is available with matching side panels. There is no choice of backing glass with RG glass. RG glass is only available as shown and cannot be changed by Apeer.

# Dunluce 1

Door APA1, Glass LO64\*  
Shown in Agate Grey

**A++**

\*Our exclusive, energy efficient A++ rating is an optional upgrade on the door only and is not available with obscure backing glass.



Furniture Shown: Pewter Noble Handle, Pewter Bull Ring Knocker, Pewter Push-in Letterplate and Pewter Door Pull. \*Glass design shown with Satin backing glass.

Every effort has been made to reproduce the colour of our Apeer doors and the coloured film in the decorative glass designs. However, printing constraints will give rise to some colour deviation. All Apeer 70mm doors are triple glazed as standard. Please note the grain on the GRP Apeer door does not replicate the grain on the frames as it is a PVC foil. Sidelight and toplight designs will depend on sidelight and toplight final sizes and may vary from design shown. Coloured film in glass designs is not an exact match to the door colour.

## Amazing Glazing

**Add a personal touch with bespoke, handcrafted glass.**

You've chosen the door style and picked a colour that perfectly complements your home. Now for the finishing touch: glass designed by you and handcrafted by our in-house artisan glaziers.



**Dunluce 3 APA3**  
Glass Code LF549  
Colour Anthracite Grey



**Dunluce 3 APA3**  
Glass Code BO508  
Colour Light Pink



**Dunluce 3 APA3**  
Glass Code LO64  
Colour Chartwell Green



**Dunluce 2**, Door APA2, Glass BO500\*  
Shown in Dark Red

**A++**

Furniture Shown: Architectural Handle, Architectural Knocker, Architectural Push-in Letterplate all shown in satin silver. \*Glass design shown with Minster backing glass.

# Banwell 3

Door ACDA3, Glass RG182,  
Sidepanel Glass RG151SL Shown in Anthracite Grey



Available width up to 1087mm



Furniture Shown: Classic Handle, Letterbox and Urn knocker shown in Chrome

Every effort has been made to reproduce the colour of our Apeer doors and the coloured film in the decorative glass designs. However, printing constraints will give rise to some colour deviation. All Apeer 70mm doors are triple glazed as standard. Please note the grain on the GRP Apeer door does not replicate the grain on the frames as it is a PVC foil. Sidelight and toplight designs will depend on sidelight and toplight final sizes and may vary from design shown. Coloured film in glass designs is not an exact match to the door colour.

## Amazing Glazing

**Add a personal touch with bespoke, handcrafted glass.**

You've chosen the door style and picked a colour that perfectly complements your home. Now for the finishing touch: glass designed by you and handcrafted by our in-house artisan glaziers.



Glass Code RG18  
Colour Black



Glass Code RG36  
Colour Agate Grey



Glass Code BO556  
Colour White



Available width up to 1087mm



Furniture Shown: Karcher Handle, Limited Edition Bumble Bee Knocker, Architectural Push-in Letterplate all shown in Chrome.

RG glass designs are only available in the door styles shown and are not available on other door styles. Matching fully glazed sidelights are not available for RG glass, some RG glass is available with matching side panels. There is no choice of backing glass with RG glass. RG glass is only available as shown and cannot be changed by Apeer.

# Portland

Door APL2, Glass BO510\*  
Shown in Porcelain Blue

**A++**

\*Our exclusive, energy efficient A++ rating is an optional upgrade on the door only and is not available with obscure backing glass.



Furniture Shown: Forged Black Noble Handle, Forged Black Bull Ring Knocker, Forged Black Push-in Letterplate, Forged Black Door Pull. \*Glass design shown with Minster backing glass.

## Amazing Glazing

**Add a personal touch with bespoke, handcrafted glass.**

You've chosen the door style and picked a colour that perfectly complements your home. Now for the finishing touch: glass designed by you and handcrafted by our in-house artisan glaziers.



Glass Code BO508  
Colour Traffic Red



Glass Code BO509  
Colour Turquoise Blue



Glass Code FT35 Clear lines and fused tiles on sandblasted background  
Colour Light Grey



Furniture Shown: Karcher Handle, Urn Knocker and Architectural Push-in Letterplate all shown in Chrome. \*Glass design shown with Minster backing glass.

Every effort has been made to reproduce the colour of our Apeer doors and the coloured film in the decorative glass designs. However, printing constraints will give rise to some colour deviation. All Apeer 70mm doors are triple glazed as standard. Please note the grain on the GRP Apeer door does not replicate the grain on the frames as it is a PVC foil. Sidelight and toplight designs will depend on sidelight and toplight final sizes and may vary from design shown. Coloured film in glass designs is not an exact match to the door colour.

# Portland

Door APL2, Glass TP1\*  
Shown in Heather Violet Pink (RAL 4003)

**A++**

\*Our exclusive, energy efficient A++ rating is an optional upgrade on the door only and is not available with obscure backing glass.

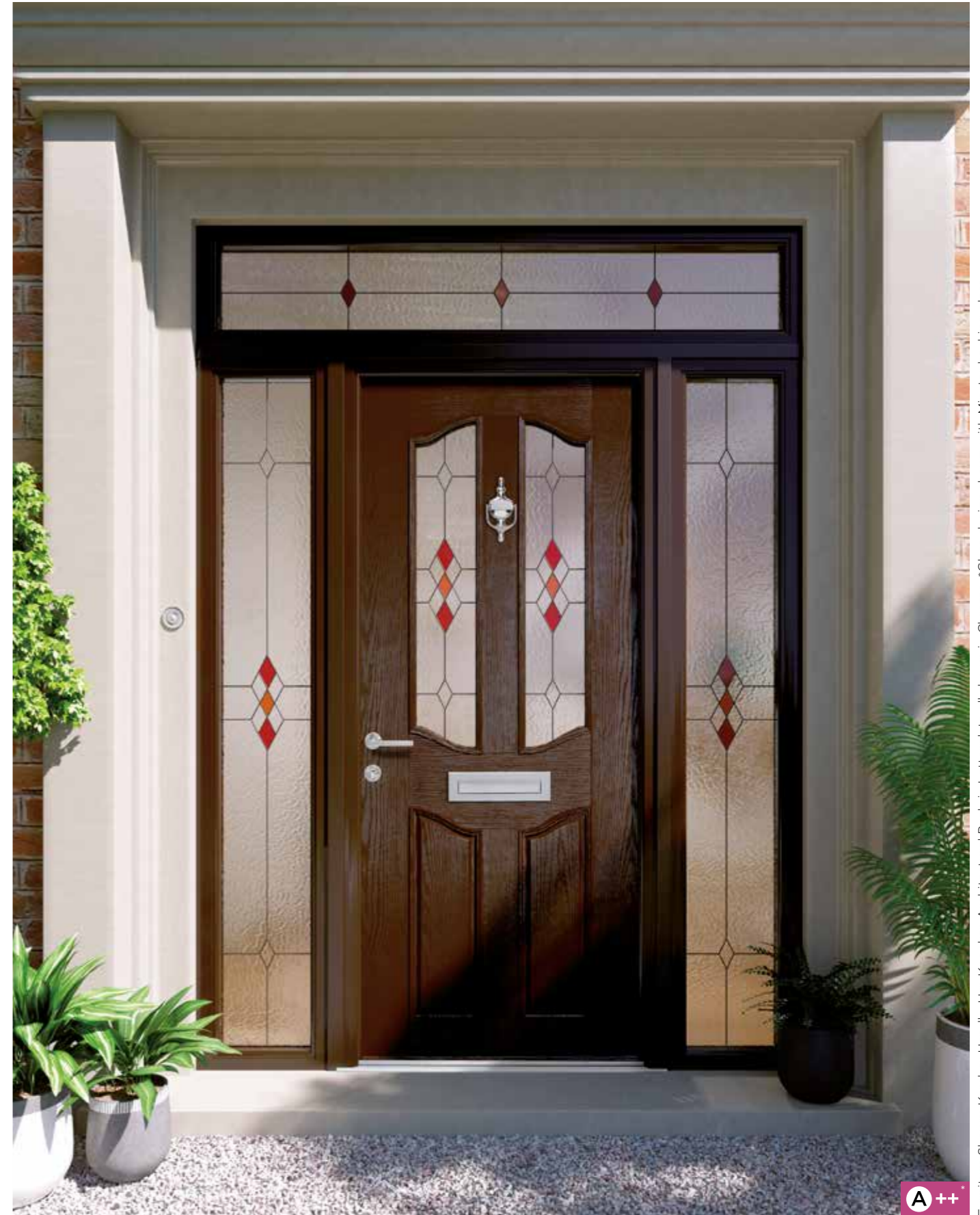
Furniture Shown: Sweet Handle, Sweet Knocker, Sweet Letterplate, Sweet Numeral all shown in Rose Gold. \*Glass design shown with Minster backing glass.



The pink film used in the glass design has a sparkle finish as shown here.

# Portland

Door APL2, Glass LF517\*  
Shown in Rosewood



Furniture Shown: Karcher Handle, Urn Knocker, Architectural Push-in Letterplate all shown in Chrome. \*Glass design shown with Minster backing glass.

**A++**

Every effort has been made to reproduce the colour of our Apeer doors and the coloured film in the decorative glass designs. However, printing constraints will give rise to some colour deviation. All Apeer 70mm doors are triple glazed as standard. Please note the grain on the GRP Apeer door does not replicate the grain on the frames as it is a PVC foil. Sidelight and toplight designs will depend on sidelight and toplight final sizes and may vary from design shown. Coloured film in glass designs is not an exact match to the door colour.



# Hanwell

Door APY2, Glass FT35\*  
Shown in Anthracite Grey

**A ++**

\*Our exclusive, energy efficient A++ rating is an optional upgrade on the door only and is not available with obscure backing glass.



Furniture Shown: Architectural Handle, Architectural Push-in Letterplate both shown in Chrome. \*Glass design shown with Minster backing glass.

## Amazing Glazing

**Add a personal touch with bespoke, handcrafted glass.**

You've chosen the door style and picked a colour that perfectly complements your home. Now for the finishing touch: glass designed by you and handcrafted by our in-house artisan glaziers.

Door APY2, Glass FT14\*  
Shown in Steel Blue



Furniture Shown: Karcher Stainless Steel Handle with Stainless Steel Letterplate. \*Glass design shown with Minster backing glass.



Glass Code BO7  
Colour Agate Grey

**A ++**



Glass Code LF35  
Colour White

**A ++**



Glass Code LO21  
Colour Porcelain Blue

**A ++**

Every effort has been made to reproduce the colour of our Apeer doors and the coloured film in the decorative glass designs. However, printing constraints will give rise to some colour deviation. All Apeer 70mm doors are triple glazed as standard. Please note the grain on the GRP Apeer door does not replicate the grain on the frames as it is a PVC foil. Sidelight and toplight designs will depend on sidelight and toplight final sizes and may vary from design shown. Coloured film in glass designs is not an exact match to the door colour.

Door APS2, Glass B07\*  
Shown in Chartwell Green



A++

Furniture Shown: Architectural Handle and Push-in Letterplate in Chrome

## Amazing Glazing

**Add a personal touch with bespoke, handcrafted glass.**

You've chosen the door style and picked a colour that perfectly complements your home. Now for the finishing touch: glass designed by you and handcrafted by our in-house artisan glaziers.



A++

Glass Code B0506  
Colour Traffic Red



A++

Glass Code B0508  
Colour Porcelain Blue



A++

Glass Code LF517  
Colour Black

## Lambton

Door APS2, Glass B07\*  
Shown in Rosewood

A++

\*Our exclusive, energy efficient A++ rating is an optional upgrade on the door only and is not available with obscure backing glass.



Furniture Shown: Gold Handle with Gold Letterplate. \*Glass design shown with Minster backing glass.

Every effort has been made to reproduce the colour of our Apeer doors and the coloured film in the decorative glass designs. However, printing constraints will give rise to some colour deviation. All Apeer 70mm doors are triple glazed as standard. Please note the grain on the GRP Apeer door does not replicate the grain on the frames as it is a PVC foil. Sidelight and toplight designs will depend on sidelight and toplight final sizes and may vary from design shown. Coloured film in glass designs is not an exact match to the door colour.

# Corellia

Door APW2, Glass RG160,  
Sidepanel Glass RG151SL, Shown in Light Grey



Furniture Shown: Regal Handle in Pewter

**A+**

Every effort has been made to reproduce the colour of our Apeer doors and the coloured film in the decorative glass designs. However, printing constraints will give rise to some colour deviation. All Apeer 70mm doors are triple glazed as standard. Please note the grain on the GRP Apeer door does not replicate the grain on the frames as it is a PVC foil. Sidelight and toplight designs will depend on sidelight and toplight final sizes and may vary from design shown. Coloured film in glass designs is not an exact match to the door colour. Letterplate not available in this style.

## Amazing Glazing

**Add a personal touch with bespoke, handcrafted glass.**

You've chosen the door style and picked a colour that perfectly complements your home. Now for the finishing touch: glass designed by you and handcrafted by our in-house artisan glaziers.

Door APW2, Glass RG161, Sidepanel Glass RG150SL  
Shown in White



**A+**

Furniture Shown: Classic Handle shown in Chrome.



**A++**

Glass Code SB27  
Colour Heather Violet Pink



**A++**

Glass Code FT48 Clear lines and fused tiles on sandblasted background  
Colour Traffic Red



RG glass designs are only available in the door styles shown and are not available on other door styles. Matching fully glazed sidelights are not available for RG glass, some RG glass is available with matching side panels. There is no choice of backing glass with RG glass. RG glass is only available as shown and cannot be changed by Apeer.

## Corellia

Door APW2, Glass RG62,  
Sidepanel Glass RG21SL, Shown in Anthracite Grey



Every effort has been made to reproduce the colour of our Apeer doors and the coloured film in the decorative glass designs. However, printing constraints will give rise to some colour deviation. All Apeer 70mm doors are triple glazed as standard. Please note the grain on the GRP Apeer door does not replicate the grain on the frames as it is a PVC foil. Sidelight and toplight designs will depend on sidelight and toplight final sizes and may vary from design shown. Coloured film in glass designs is not an exact match to the door colour.

RG glass designs are only available in the door styles shown and are not available on other door styles. Matching fully glazed sidelights are not available for RG glass, some RG glass is available with matching side panels. There is no choice of backing glass with RG glass. RG glass is only available as shown and cannot be changed by Apeer.



# Hoth

Door ACDG3, Glass RG154,  
Sidepanel Glass RG150SL, Shown in White



Available width up to 1087mm



Furniture Shown: Architectural Handle and Push-in Letterplate in Chrome

Every effort has been made to reproduce the colour of our Apeer doors and the coloured film in the decorative glass designs. However, printing constraints will give rise to some colour deviation. All Apeer 70mm doors are triple glazed as standard. Please note the grain on the GRP Apeer door does not replicate the grain on the frames as it is a PVC foil. Sidelight and toplight designs will depend on sidelight and toplight final sizes and may vary from design shown. Coloured film in glass designs is not an exact match to the door colour.

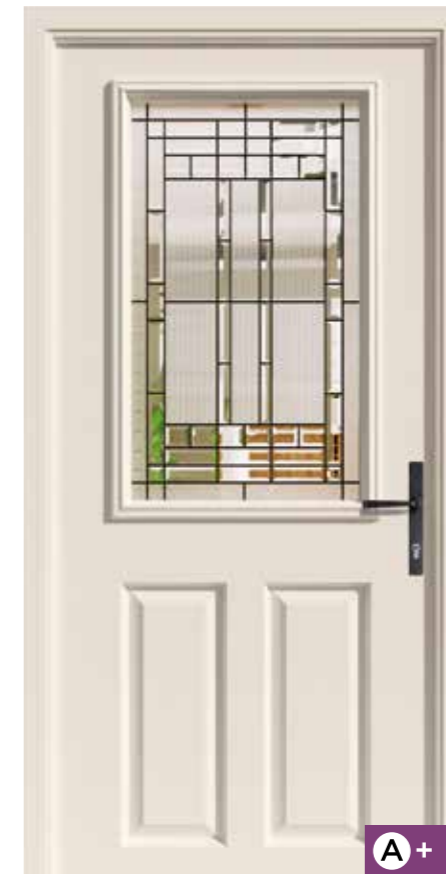
## Amazing Glazing

**Add a personal touch with bespoke, handcrafted glass.**

You've chosen the door style and picked a colour that perfectly complements your home. Now for the finishing touch: glass designed by you and handcrafted by our in-house artisan glaziers.



Glass Code SQ Lead (Square Lead)  
Colour Turquoise Blue



Glass Code RG181  
Colour Cream



Glass Code FT43 Clear lines and fused tiles on sandblasted background  
Colour Light Blue



Available width up to 1087mm



Furniture Shown: Sweet handle and Letterplate in Rose Gold

RG glass designs are only available in the door styles shown and are not available on other door styles. Matching fully glazed sidelights are not available for RG glass, some RG glass is available with matching side panels. There is no choice of backing glass with RG glass. RG glass is only available as shown and cannot be changed by Apeer.

# Amazing Glazing

**Add a personal touch with bespoke, handcrafted glass.**

You've chosen the door style and picked a colour that perfectly complements your home. Now for the finishing touch: glass designed by you and handcrafted by our in-house artisan glaziers.

## Kamino

Door ACDD2, Glass RG156, Sidelight Glass SB27  
Shown in Porcelain Blue



Available width up to 1087mm

A+

Furniture Shown: Monkey Tail Handle and Push-in Letterplate in Forged Black  
SB27 Clear visible border is 25mm



Glass Code RG6  
Colour Traffic Yellow

A+



Glass Code RG41  
Colour Black

A+



Glass Code RG4  
Colour Pale Lilac

A+

RG glass designs are only available in the door styles shown and are not available on other door styles. Matching fully glazed sidelights are not available for RG glass, some RG glass is available with matching side panels. There is no choice of backing glass with RG glass. RG glass is only available as shown and cannot be changed by Apeer.

## Mandalore

Door ACDD3, Glass RG157, Sidelight Glass SB27  
Shown in RAL7032 Pebble Grey



Available width up to 1087mm

A+

Furniture Shown: Noble Handle and Push-in Letterplate in Forged Black. SB27 Clear visible border is 25mm.

Every effort has been made to reproduce the colour of our Apeer doors and the coloured film in the decorative glass designs. However, printing constraints will give rise to some colour deviation. All Apeer 70mm doors are triple glazed as standard. Please note the grain on the GRP Apeer door does not replicate the grain on the frames as it is a PVC foil. Sidelight and toplight designs will depend on sidelight and toplight final sizes and may vary from design shown. Coloured film in glass designs is not an exact match to the door colour.

# Endor

Door ACDQ2, Glass RG158, Sidepanel Glass RG151SL, Shown in Porcelain Blue



Available width up to 1087mm



Furniture Shown: Noble Handle, Push-in Letterplate, Bull Ring knocker and Door Pull all in Forged Black

## Amazing Glazing

**Add a personal touch with bespoke, handcrafted glass.**

You've chosen the door style and picked a colour that perfectly complements your home. Now for the finishing touch: glass designed by you and handcrafted by our in-house artisan glaziers.



Glass Code RG159  
Colour Anthracite Grey



Glass Code BO556  
Colour Traffic Red



Glass Code BO7  
Colour Light Grey

Every effort has been made to reproduce the colour of our Apeer doors and the coloured film in the decorative glass designs. However, printing constraints will give rise to some colour deviation. All Apeer 70mm doors are triple glazed as standard. Please note the grain on the GRP Apeer door does not replicate the grain on the frames as it is a PVC foil. Sidelight and toplight designs will depend on sidelight and toplight final sizes and may vary from design shown. Coloured film in glass designs is not an exact match to the door colour.

RG glass designs are only available in the door styles shown and are not available on other door styles. Matching fully glazed sidelights are not available for RG glass, some RG glass is available with matching side panels. There is no choice of backing glass with RG glass. RG glass is only available as shown and cannot be changed by Apeer.

Door ACDV2, Glass RG168, Sidepanel Glass RG21SL  
Shown in Agate Grey



Available width up to 1087mm



Furniture Shown: 1200mm Black bar handle and escutcheon plate

## Amazing Glazing

**Add a personal touch with bespoke, handcrafted glass.**

You've chosen the door style and picked a colour that perfectly complements your home. Now for the finishing touch: glass designed by you and handcrafted by our in-house artisan glaziers.



Glass Code SB27  
Colour Light Blue



Glass Code FT48 Clear lines and fused tiles on sandblasted background  
Colour Traffic Yellow



Glass Code Diamond Lead (DL)  
Colour Traffic Purple

RG glass designs are only available in the door styles shown and are not available on other door styles. Matching fully glazed sidelights are not available for RG glass, some RG glass is available with matching side panels. There is no choice of backing glass with RG glass. RG glass is only available as shown and cannot be changed by Apeer.

## Alderaan

Letterplate not available on this door style

Door ACDV2, Glass RG167, Sidepanel Glass RG162SL,  
Shown in Anthracite Grey



Available width up to 1087mm



Furniture Shown: 1500mm Square Bar Handle and square escutcheon plate in chrome

Every effort has been made to reproduce the colour of our Apeer doors and the coloured film in the decorative glass designs. However, printing constraints will give rise to some colour deviation. All Apeer 70mm doors are triple glazed as standard. Please note the grain on the GRP Apeer door does not replicate the grain on the frames as it is a PVC foil. Sidelight and toplight designs will depend on sidelight and toplight final sizes and may vary from design shown. Coloured film in glass designs is not an exact match to the door colour.



# Toppin 3

Door ACDC3, Glass RG1  
Shown in Dark Red



Available width up to 1087mm

A+

Furniture Shown: Classic handle and Letterplate in Chrome

## Amazing Glazing

**Add a personal touch with bespoke, handcrafted glass.**

You've chosen the door style and picked a colour that perfectly complements your home. Now for the finishing touch: glass designed by you and handcrafted by our in-house artisan glaziers.



A+

**Toppin 5** ACDC5  
Glass Code External Bar  
Colour Black



A+

**Toppin 2** ACDC2  
Glass Code RG34  
Colour Dark Green



A+

**Toppin 3** ACDC3  
Glass Code RG30  
Colour Oak

Every effort has been made to reproduce the colour of our Apeer doors and the coloured film in the decorative glass designs. However, printing constraints will give rise to some colour deviation. All Apeer 70mm doors are triple glazed as standard. Please note the grain on the GRP Apeer door does not replicate the grain on the frames as it is a PVC foil. Sidelight and toplight designs will depend on sidelight and toplight final sizes and may vary from design shown. Coloured film in glass designs is not an exact match to the door colour.

RG glass designs are only available in the door styles shown and are not available on other door styles. Matching fully glazed sidelights are not available for RG glass, some RG glass is available with matching side panels. There is no choice of backing glass with RG glass. RG glass is only available as shown and cannot be changed by Apeer.

# Marmion

Door ACDL2, Glass RG29  
Shown in Chartwell Green



Available width up to 1087mm



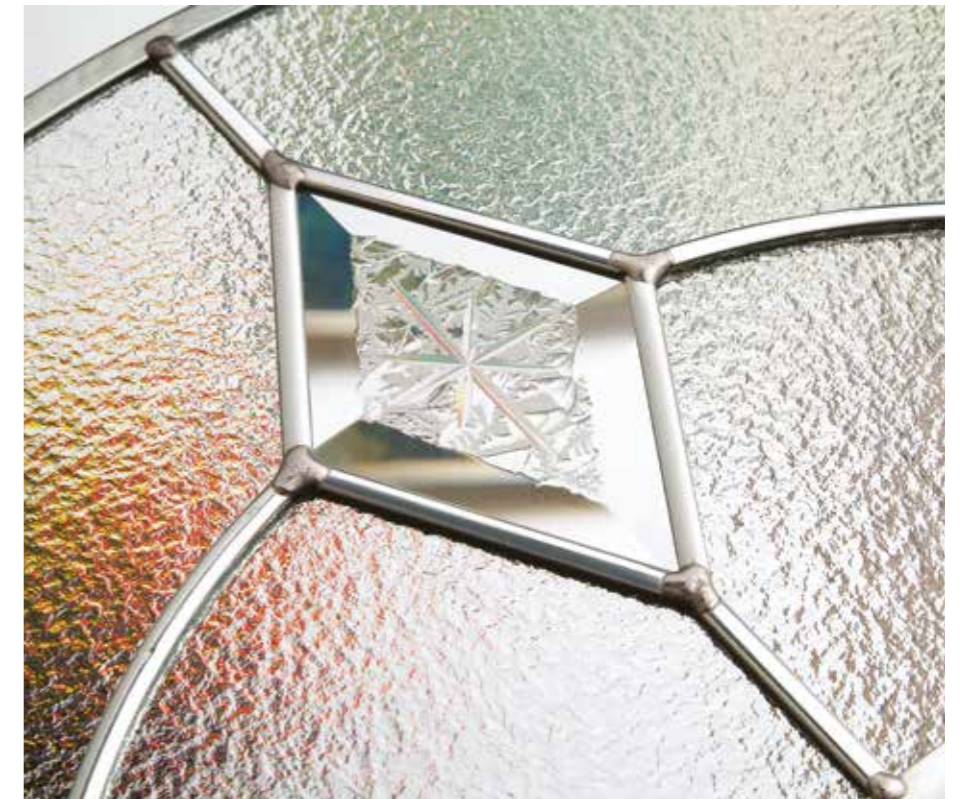
Furniture Shown: Classic handle and Letterplate in Chrome

Every effort has been made to reproduce the colour of our Apeer doors and the coloured film in the decorative glass designs. However, printing constraints will give rise to some colour deviation. All Apeer 70mm doors are triple glazed as standard. Please note the grain on the GRP Apeer door does not replicate the grain on the frames as it is a PVC foil. Sidelight and toplight designs will depend on sidelight and toplight final sizes and may vary from design shown. Coloured film in glass designs is not an exact match to the door colour.

## Amazing Glazing

**Add a personal touch with bespoke, handcrafted glass.**

You've chosen the door style and picked a colour that perfectly complements your home. Now for the finishing touch: glass designed by you and handcrafted by our in-house artisan glaziers.



**Downton ACDL3**  
Glass Code RG16  
Colour Dark Green



**Downton ACDL3**  
Glass Code RG11  
Colour Dark Red



**Marmion ACDL2**  
Glass Code RG23  
Colour Steel Blue

RG glass designs are only available in the door styles shown and are not available on other door styles. Matching fully glazed sidelights are not available for RG glass, some RG glass is available with matching side panels. There is no choice of backing glass with RG glass. RG glass is only available as shown and cannot be changed by Apeer.



Kirtling APG4 FT48



# STABLE DOORS

Perfect for lazy summer days and fresh frosty mornings, stable doors keep pets and children secure while letting air circulate and sunlight stream in. They also add a touch of rustic charm to any home.

Penhurst SD0



Walworth SD2 RG45



Oxford SD5 RG51



Ince SD36



Blencow SD37



Clear with Stippolyte backing glass.

Stippolyte backing glass.

Every effort has been made to reproduce the colour of our Apeer doors and the coloured film in the decorative glass designs. However, printing constraints will give rise to some colour deviation. All Apeer 70mm doors are triple glazed as standard. Please note the grain on the GRP Apeer door does not replicate the grain on the frames as it is a PVC foil. Glass designs shown in sidelights may vary depending on sidelight width. Coloured film in glass designs is not an exact match to the door colour. Stable doors are not suitable for extremely exposed locations.

Hinge bolts are not available on stable doors.

# Hanwell Stable

Door APY4, Glass BO500\*  
Shown in Cream



Furniture Shown: Gold Handle with Escutcheon Plate. \*Glass design shown with Minster backing glass.

RG glass designs are only available in the door styles shown and are not available on other door styles. Matching fully glazed sidelights are not available for RG glass, some RG glass is available with matching side panels. There is no choice of backing glass with RG glass. RG glass is only available as shown and cannot be changed by Apeer.

Door ACDV2 French doors, Glass RG167, Sidelight Glass SB27, Shown in Agate Grey



# FRENCH DOORS

Our double doors make a grand entrance. They not only give the front of your home scale and stature, they feature all the robust safety benefits of our single doors. And with a double rebate and triple glazing as standard, they are equally energy efficient.



Every effort has been made to reproduce the colour of our Apeer doors and the coloured film in the decorative glass designs. However, printing constraints will give rise to some colour deviation. All Apeer 70mm doors are triple glazed as standard. Please note the grain on the GRP Apeer door does not replicate the grain on the PVC foil. Glass designs shown in sidelights may vary depending on sidelight width. Coloured film in glass designs is not an exact match to the door colour. Double doors open inward only.

## Alderaan French Door Style

Door ACDV2 French doors, Glass RG168, Sidelight Glass SB27, Shown in Black



Hinge bolts are not available on French doors.

French doors are not available in certain styles

Furniture Shown: Chrome Handles, SB27 Clear visible border is 25mm

**A++**

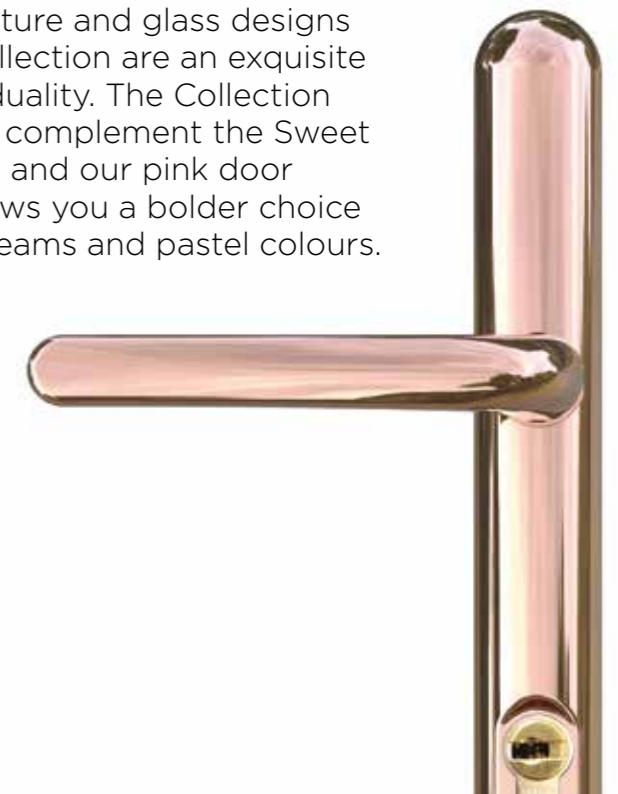
\*Our exclusive, energy efficient A++ rating is an optional upgrade on the door only and is not available with obscure backing glass.

Furniture Shown: Sweet Handle, Sweet Knocker, Sweet Letterplate all shown in Rose Gold. \*Glass design shown with Minster backing glass.



## ROSE GOLD COLLECTION

Distinctively different and fabulously on-trend, the door furniture and glass designs in our Rose Gold Collection are an exquisite expression of individuality. The Collection has been created to complement the Sweet door furniture range and our pink door shades, but also allows you a bolder choice when paired with creams and pastel colours.



Rowton APM2\*  
Glass GR1  
Shown in Light Pink (RAL 3015)

Every effort has been made to reproduce the colour of our Apeer doors and the coloured film in the decorative glass designs. However, printing constraints will give rise to some colour deviation. Please note the grain on the GRP Apeer door does not replicate the grain on the frame as it is a PVC foil. Glass designs shown in sidelights may vary depending on sidelight width. Coloured film in glass designs is not an exact match to the door colour. Sidelights and toplights for TP glass designs are only available as triple glazed units. Rose Gold designs shown with Antique grey lead.

The glass has been designed by our inhouse glass designers specifically for this collection and any imprints on the film are a natural part of the handcrafted process.

## Bespoke Colours

Your front door is the focal point of your home's façade. But it's more than just an entrance. It speaks to the world on your behalf. It reflects your personality and stands for the same things you do.



Rainbow colour options only available on door style APY2 and colours can not be changed as shown

Colours featured are (left to right):  
 Telemagenta Pink (RAL 4010),  
 Traffic Red (RAL 3020),  
 Mandarin Orange (BS06E51),  
 Traffic Yellow (RAL 1023),  
 Racing Green (RAL 6005),  
 Steel Blue,  
 Traffic Purple (RAL 4006),  
 Telemagenta Pink (RAL 4010).

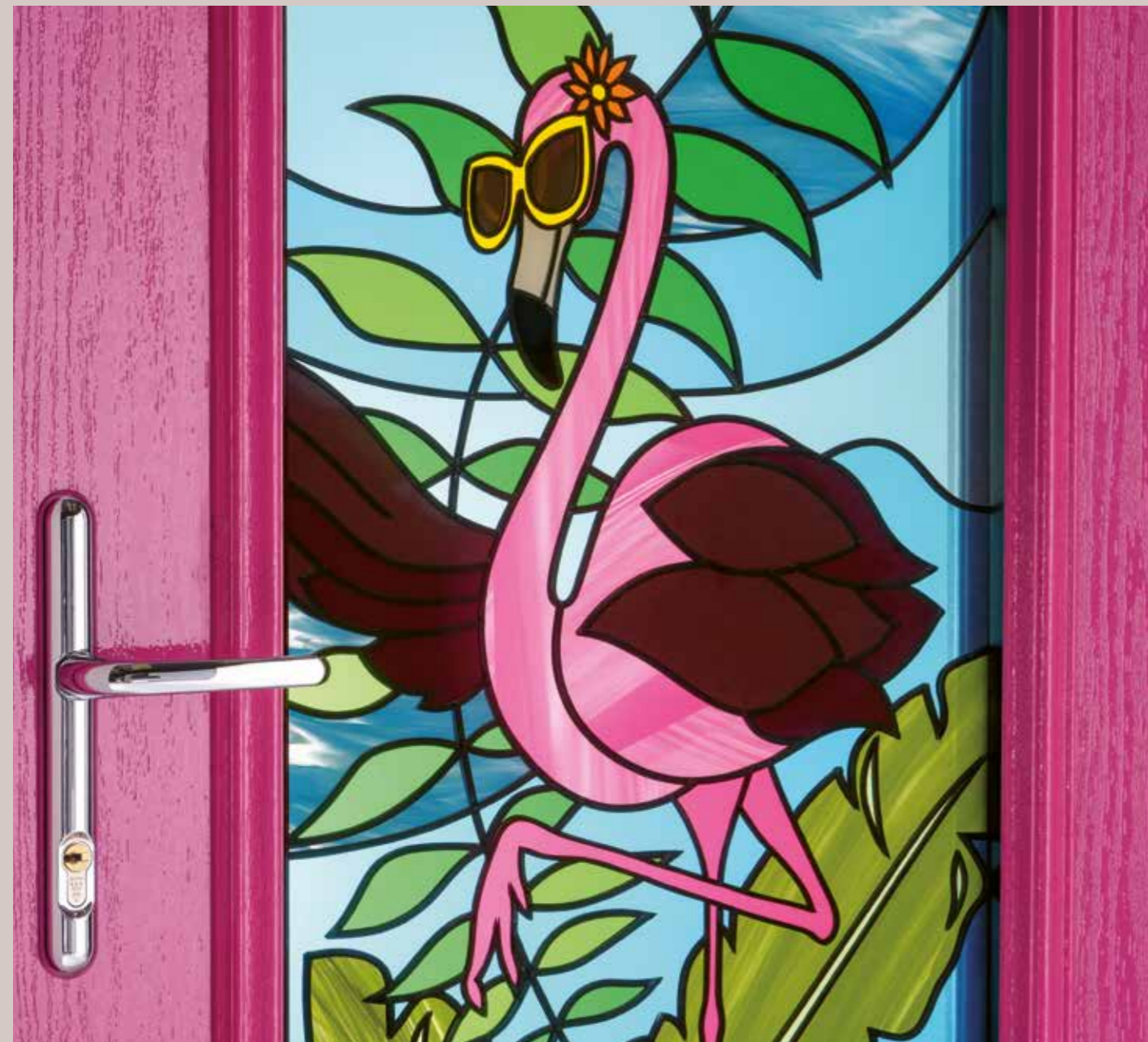
Outer frame and glazing trim are shown in Standard White.

Glass design is lead and coloured film



## Fabulous Flamingo

We pride ourselves on the creativity of our amazing glazing artisans. Send us your dream glass design and we'll do our best to make your dream a reality.



Fabulous Flamingo door style shown is ACDV2 Alderaan in Telemagenta Pink (RAL 4010).

Glass design is lead and coloured film.



Available width up to 1087mm

Every effort has been made to reproduce the colour of our Apeer doors and the coloured film in the decorative glass designs. However, printing constraints will give rise to some colour deviation. Please note the grain on the GRP Apeer door does not replicate the grain on the frame as it is a PVC foil. Glass designs shown in sidelights may vary depending on sidelight width. Coloured film in glass designs is not an exact match to the door colour. Sidelights and toplights for TP glass designs are only available as triple glazed units. Rose Gold designs shown with Antique grey lead.

The glass has been designed by our inhouse glass designers specifically for this collection and any imprints on the film are a natural part of the handcrafted process.



## CONTEMPORARY COLLECTION

Clean, fresh lines and polished angular details make our Contemporary collection perfect for cutting edge homes and forward-thinking owners.



# Birr

Door APTS33, Glass SB27  
Shown in Anthracite Grey

**A++**

\*Our exclusive, energy efficient A++ rating is an optional upgrade on the door only and is not available with obscure backing glass.



Furniture Shown: Karcher Handle. SB27 clear visible border is 25mm. Letterbox not available on this door style.

## Amazing Glazing

**Add a personal touch with bespoke, handcrafted glass.**

You've chosen the door style and picked a colour that perfectly complements your home. Now for the finishing touch: glass designed by you and handcrafted by our in-house artisan glaziers.

Door APTS33, Glass TP4\*  
Shown in Antique Pink (RAL 3014)



**A++**

Furniture Shown: Sweet handle in Rose Gold. \*TP4 glass design has rose gold film and pearlescent bevels, shown with Minster backing glass



**A+**

Glass Code RG20  
Colour Light Blue



**A++**

Glass Code FT50 (no sandblasting)  
Colour Pale Lilac



**A++**

Glass Code BO500  
Colour Porcelain Blue

Every effort has been made to reproduce the colour of our Apeer doors and the coloured film in the decorative glass designs. However, printing constraints will give rise to some colour deviation. All Apeer 70mm doors are triple glazed as standard. Please note the grain on the GRP Apeer door does not replicate the grain on the frames as it is a PVC foil. Glass designs shown in sidelights may vary depending on sidelight width. Coloured film in glass designs is not an exact match to the door colour. The glass has been designed by our inhouse glass designers specifically for this collection and any imprints on the film are a natural part of the handcrafted process.

RG glass designs are only available in the door styles shown and are not available on other door styles. Matching fully glazed sidelights are not available for RG glass, some RG glass is available with matching side panels. There is no choice of backing glass with RG glass. RG glass is only available as shown and cannot be changed by Apeer.

# Mawes

Door APTS2, Glass BO500\*  
Shown in Black

**A++**

\*Our exclusive, energy efficient A++ rating is an optional upgrade on the door only and is not available with obscure backing glass.



Furniture Shown: Karcher handle in stainless steel. \*Glass design shown with Minster backing glass.

## Amazing Glazing

**Add a personal touch with bespoke, handcrafted glass.**

You've chosen the door style and picked a colour that perfectly complements your home. Now for the finishing touch: glass designed by you and handcrafted by our in-house artisan glaziers.

Door APTS2, Glass BO501  
Shown in Light Grey



**A++**

Furniture Shown: Black classic handle. \*Glass design shown with Minster backing glass.



**A++**

Glass Code SB27  
Colour Green Mist



**A++**

Glass Code BO559  
Colour Agate Grey



**A+**

Glass Code RG46  
Colour Turquoise Blue

Every effort has been made to reproduce the colour of our Apeer doors and the coloured film in the decorative glass designs. However, printing constraints will give rise to some colour deviation. All Apeer 70mm doors are triple glazed as standard. Please note the grain on the GRP Apeer door does not replicate the grain on the frames as it is a PVC foil. Glass designs shown in sidelights may vary depending on sidelight width. Coloured film in glass designs is not an exact match to the door colour. The glass has been designed by our inhouse glass designers specifically for this collection and any imprints on the film are a natural part of the handcrafted process.

RG glass designs are only available in the door styles shown and are not available on other door styles. Matching fully glazed sidelights are not available for RG glass. Some RG glass is available with matching side panels. There is no choice of backing glass with RG glass. RG glass is only available as shown and cannot be changed by Apeer.

# Dalston

Door APTS12, Glass FT50 on clear glass  
Sidelight Glass SB27, Shown in Black

**A++**

\*Our exclusive, energy efficient A++ rating is an optional upgrade on the door only and is not available with obscure backing glass.



Furniture Shown: 600mm Bar Pull Handle. SB27 clear visible border is 25mm.

## Amazing Glazing

**Add a personal touch with bespoke, handcrafted glass.**

You've chosen the door style and picked a colour that perfectly complements your home. Now for the finishing touch: glass designed by you and handcrafted by our in-house artisan glaziers.



Glass Code SB123  
Colour Light Blue



Glass Code SB26  
Colour Traffic Yellow



Glass Code SB27  
Colour Light Grey

Every effort has been made to reproduce the colour of our Apeer doors and the coloured film in the decorative glass designs. However, printing constraints will give rise to some colour deviation. All Apeer 70mm doors are triple glazed as standard. Please note the grain on the GRP Apeer door does not replicate the grain on the frames as it is a PVC foil. Glass designs shown in sidelights may vary depending on sidelight width. Coloured film in glass designs is not an exact match to the door colour. The glass has been designed by our inhouse glass designers specifically for this collection and any imprints on the film are a natural part of the handcrafted process.

RG glass designs are only available in the door styles shown and are not available on other door styles. Matching fully glazed sidelights are not available for RG glass, some RG glass is available with matching side panels. There is no choice of backing glass with RG glass. RG glass is only available as shown and cannot be changed by Apeer.

# Fraser

Door APTS16, Glass RG21,  
Sidelight Glass SB27, Shown in White



Furniture Shown: 600mm Bar Pull Handle. SB27 clear visible border is 25mm.

**A+**

## Amazing Glazing

**Add a personal touch with bespoke, handcrafted glass.**

You've chosen the door style and picked a colour that perfectly complements your home. Now for the finishing touch: glass designed by you and handcrafted by our in-house artisan glaziers.



**A++**

Glass Code SB121  
Colour Traffic Red



**A++**

Glass Code SB27  
Colour Porcelain Blue



**A+**

Glass Code RG23  
Colour Black

Every effort has been made to reproduce the colour of our Apeer doors and the coloured film in the decorative glass designs. However, printing constraints will give rise to some colour deviation. All Apeer 70mm doors are triple glazed as standard. Please note the grain on the GRP Apeer door does not replicate the grain on the frames as it is a PVC foil. Glass designs shown in sidelights may vary depending on sidelight width. Coloured film in glass designs is not an exact match to the door colour. The glass has been designed by our inhouse glass designers specifically for this collection and any imprints on the film are a natural part of the handcrafted process.

RG glass designs are only available in the door styles shown and are not available on other door styles. Matching fully glazed sidelights are not available for RG glass, some RG glass is available with matching side panels. There is no choice of backing glass with RG glass. RG glass is only available as shown and cannot be changed by Apeer.

# Beetham

Door APTS6, Glass SB27, Sidelight Glass SB27 with Clear backing glass, Shown in Dark Green

**A++**

\*Our exclusive, energy efficient A++ rating is an optional upgrade on the door only and is not available with obscure backing glass.



Furniture Shown: 1200mm bar handle

## Amazing Glazing

**Add a personal touch with bespoke, handcrafted glass.**

You've chosen the door style and picked a colour that perfectly complements your home. Now for the finishing touch: glass designed by you and handcrafted by our in-house artisan glaziers.



**Kenmure** APTS4  
Glass Code SB27  
Colour Dark Green



**Beetham** APTS6  
Glass Code FT50 (no sandblast)  
Colour Green Mist



**Beetham** APTS6  
Glass Code RG35  
Colour Black



**Kenmure** APTS4  
Glass Code RG20  
Colour Anthracite Grey



**Beetham** APTS6  
Glass Code RG18  
Colour Light Grey

Every effort has been made to reproduce the colour of our Apeer doors and the coloured film in the decorative glass designs. However, printing constraints will give rise to some colour deviation. All Apeer 70mm doors are triple glazed as standard. Please note the grain on the GRP Apeer door does not replicate the grain on the frames as it is a PVC foil. Glass designs shown in sidelights may vary depending on sidelight width. Coloured film in glass designs is not an exact match to the door colour. The glass has been designed by our inhouse glass designers specifically for this collection and any imprints on the film are a natural part of the handcrafted process.

RG glass designs are only available in the door styles shown and are not available on other door styles. Matching fully glazed sidelights are not available for RG glass, some RG glass is available with matching side panels. There is no choice of backing glass with RG glass. RG glass is only available as shown and cannot be changed by Apeer.

# Compton

Door APTS26, Glass RG54, Sidelight Glass SB27, Shown in Light Grey



Furniture Shown: 1200mm Bar Pull Handle, SB27 clear visible border is 25mm.

**A+**

## Amazing Glazing

**Add a personal touch with bespoke, handcrafted glass.**

You've chosen the door style and picked a colour that perfectly complements your home. Now for the finishing touch: glass designed by you and handcrafted by our in-house artisan glaziers.



**A+**

**Compton** APTS26  
Glass Code RG165  
Colour White



**A+**

**Lulworth** APTS29  
Glass Code RG164  
Colour Light Blue



**A+**

**Compton** APTS26  
Glass Code RG162  
Colour Mandarin Orange

Every effort has been made to reproduce the colour of our Apeer doors and the coloured film in the decorative glass designs. However, printing constraints will give rise to some colour deviation. All Apeer 70mm doors are triple glazed as standard. Please note the grain on the GRP Apeer door does not replicate the grain on the frames as it is a PVC foil. Glass designs shown in sidelights may vary depending on sidelight width. Coloured film in glass designs is not an exact match to the door colour. The glass has been designed by our inhouse glass designers specifically for this collection and any imprints on the film are a natural part of the handcrafted process.

RG glass designs are only available in the door styles shown and are not available on other door styles. Matching fully glazed sidelights are not available for RG glass, some RG glass is available with matching side panels. There is no choice of backing glass with RG glass. RG glass is only available as shown and cannot be changed by Apeer.

# Mortham

Door APTS0, Sidelight Glass SB27  
Shown in Anthracite Grey

**A++**

\*Our exclusive, energy efficient A++ rating is an optional upgrade on the door only and is not available with obscure backing glass.



Furniture Shown: Karcher Handle shown in Chrome. SB27 clear visible border is 25mm.

# Bickleigh

Door APTS25, Glass SB27  
Shown in Light Grey



Furniture Shown: Karcher Handle shown in Stainless Steel. SB27 clear visible border is 25mm.

**A++**

Every effort has been made to reproduce the colour of our Apeer doors and the coloured film in the decorative glass designs. However, printing constraints will give rise to some colour deviation. All Apeer 70mm doors are triple glazed as standard. Please note the grain on the GRP Apeer door does not replicate the grain on the frames as it is a PVC foil. Glass designs shown in sidelights may vary depending on sidelight width. Coloured film in glass designs is not an exact match to the door colour. The glass has been designed by our inhouse glass designers specifically for this collection and any imprints on the film are a natural part of the handcrafted process.

## S M O O T H A S

Our designers have created a sleek and effortlessly luxurious range that makes a stylish statement. The surface of Silka has a unique, smooth texture that sets the range apart from any other.

# SILKA



LOVE EVERY

# COLOUR

You bring the colour.  
 We'll match the door.  
 New Silka Colour.  
 A match for anything.

## Hayton

Door SFG20, Glass RG163, Sidepanel Glass RG163SL  
 Shown in Black with Lines

Available in any **colour**



Furniture Shown: 1200mm Bar Pull Handle.



RG glass designs are only available in the door styles shown and are not available on other door styles. Matching fully glazed sidelights are not available for RG glass, some RG glass is available with matching side panels. There is no choice of backing glass with RG glass. RG glass is only available as shown and cannot be changed by Apeer.

# Hayton

Door SFG20, Glass RG164, Sidepanel Glass RG164SL  
Shown in Light Pink

Available in any **colour**



A+

Furniture Shown: 1200mm Bar Pull Handle

Door SFG20, Glass RG162, Sidepanel Glass RG162SL  
Shown in Anthracite Grey

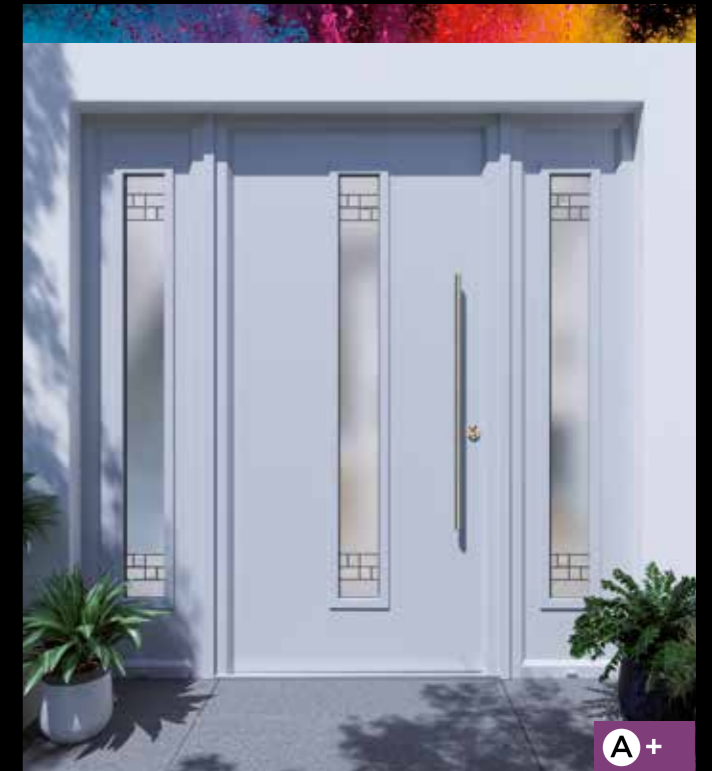
Available in any **colour**



A+

Door SFG20, Glass RG165, Sidepanel Glass RG165SL  
Shown in Porcelain Blue

Available in any **colour**



A+



Available in any **colour**

Door SFG20, Glass RG166, Sidepanel Glass RG166SL  
Shown in Green Mist

Available in any **colour**



A+

Every effort has been made to reproduce the colour of our Apeer doors and the coloured film in the decorative glass designs. However, printing constraints will give rise to some colour deviation. All Apeer 70mm doors are triple glazed as standard. Please note the grain on the GRP Apeer door does not replicate the grain on the frames as it is a PVC foil. Glass designs shown in sidelights may vary depending on sidelight width. Coloured film in glass designs is not an exact match to the door colour.

RG glass designs are only available in the door styles shown and are not available on other door styles. Matching fully glazed sidelights are not available for RG glass, some RG glass is available with matching side panels. There is no choice of backing glass with RG glass. RG glass is only available as shown and cannot be changed by Apeer.

Introducing a new smooth textured glazing trim on our Silka Doors. This new design allows us to offer the Silka Hayton door style in all our colours, making it more versatile and suitable for any residential setting.



# Wilton

Door SFG7 - Glass Trim, Glass SB27  
Shown in Black with Lines

**A++**  
\*Our exclusive, energy efficient A++ rating is an optional upgrade on the door only and is not available with obscure backing glass.



Furniture Shown: 1200mm Bar Pull Handle, SB27 clear visible border is 25mm.

Every effort has been made to reproduce the colour of our Apeer doors and the coloured film in the decorative glass designs. However, printing constraints will give rise to some colour deviation. All Apeer 70mm doors are triple glazed as standard. Glass designs shown in sidelights may vary depending on sidelight width. Coloured film in glass designs is not an exact match to the door colour.

# Wilton

Door SFG7 - Glass Trim, Glass SB27  
Shown in Anthracite Grey



Furniture Shown: 1200mm Bar Pull Handle, SB27 clear visible border is 25mm.

**A++**



WAIST HIGH LOCK SYSTEM

Shown (left) with round escutcheon plate and 1200mm bar pull handle.



Shown (above) with round escutcheon plate and Karcher lever handle.

INTERNAL GLAZING FINISH

All-glass glazing trims are finished with stainless steel trims on the inside.



CONTEMPORARY FRAME

The Silka Collection is manufactured with a chamfered frame.



HINGE OPTIONS

All Silka doors are available with a choice of two hinges:

Flag Hinges

Butt Hinges



External view:  
Anthracite Grey shown with round escutcheon plate and 1200mm bar handle on the outside.

Internal view:  
Light Grey shown with round escutcheon plate and Karcher lever handle.



External View



FINGER PULL  
Shown in stainless steel.  
Also available in black.



Internal View

SILKA COLOUR OPTIONS:

**SFG0 - SFG6**

Available in all colours including suitable RAL and BS colours.

**SFG7 + SFG8**

Only available in Anthracite grey and Black outside (to match the all-glass trim).

**SFG20**

Available in all colours including suitable RAL and BS colours.

**Bespoke lines**

Only available on Anthracite grey and Black



## MODO COLLECTION

The very latest international design trends influence our cutting edge Modo Collection.

# Somerton

Door AMD2, Glass ST61, Sidelight Glass SB27  
Shown in Anthracite Grey

**A++**

\*Our exclusive, energy efficient A++ rating is an optional upgrade on the door only and is not available with obscure backing glass.



Furniture Shown: 1200mm Bar Pull Handle, SB27 clear visible border is 25mm.

All MODO doors excluding Double doors are available with lever handles or contemporary handles. Double doors are only available with lever handles. Please note 'Tea staining' on stainless steel components is common and is caused by the oxidation of surface contaminants on stainless steel. It does not affect the structural integrity or the longevity of the material and regular cleaning of the stainless steel trims will reduce the likelihood of tea staining.

# Elsdon

Door AMD5, Glass SR30, Sidelight Glass SB27  
Shown in Anthracite Grey



Furniture Shown: Karcher Handle shown in Stainless Steel, SB27 clear visible border is 25mm.

**A++**

Please note 'Tea staining' on stainless steel components is common and is caused by the oxidation of surface contaminants on stainless steel. It is not an indication of quality and does not affect the structural integrity or the longevity of the material and periodic cleaning of the stainless steel trims will reduce the likelihood of tea staining.

Our new glazed GRP side panels add style and sophistication to your home.

The ultimate partner to your door. Perfectly match your door glass design with your sidelight glass using our latest innovation in sidelight design. The moulded glazing trim matches perfectly to the door and we ensure a designer look by lining the top of the door and side panel trims across the full width of your door set.



Apeer side panels are made using high strength glass fibre laminate, utilising a combination of glass fibre weave, reinforced with magnesium silicate board and high density foam to ensure the ultimate in security and energy efficiency.



Max width: 550mm inc frame  
 Max height: same height as door  
 Min width: TBC  
 Min height: TBC

Witness lines are visible between the horizontal and vertical panels that make up the doors and side panels. Combined with our realistic grained finish, the witness lines add to the natural look of your door.

Side panels are only available with certain door styles and RG glass designs.



# ACCESSORIES

Designed with care and crafted to last, our accessories have been created to complement our door collections. From traditional rustic metalwork to high-end polished chrome, you don't have to look further than the next few pages to complete your Apeer door.



## PREMIUM Architectural Door Furniture

Architectural Door Furniture  
is available in 2 colours:  
Chrome & Satin Silver

Door Handle shown in Chrome



Door Knocker and Push-in Letterplate  
both shown in Chrome



# PREMIUM Heritage Door Furniture

Bull Ring Knocker  
Shown in Satin Silver



Our Heritage range has been designed with curved corners on the handle and letterplate to suit a more traditional style.

Heritage Door Furniture is available in 2 colours: Chrome & Satin Silver

Doctors Knocker only available in Chrome as shown



The Doctors Knocker has a 1 year guarantee



Push-in Letterplate  
Shown in Chrome

Door Pull  
Shown in Satin Silver

Door Handle  
Shown in Chrome

# PREMIUM Limited Edition Door Knockers

Add a touch of character to your door entrance. Each knocker has been handcrafted and finished using high quality materials. So if you're looking for something truly unique, this collection suits all styles and tastes.

Our Bumble Bee, Dragonfly and Heart Knockers are only available in Chrome and can only be fitted to certain door styles.



Bumble Bee Knocker  
Shown in Chrome



Dragonfly Knocker  
Shown in Chrome



Heart Knocker  
Shown in Chrome



## PREMIUM Sweet Door Furniture

Door Handle shown in Rose Gold



Sweet Door Furniture is available in 5 colours: Rose Gold, Chrome, Black, Satin Silver and Gold.

Door Knocker shown in Rose Gold



Letterplate and Numeral shown in Rose Gold



## PREMIUM Stainless Steel Door Furniture

Door Handle shown in Stainless Steel



Our stainless-steel door furniture is particularly suited to coastal areas with higher salt content in the air. Corrosion-resistant, just like the doors themselves, means minimal upkeep and maximum visual impact.



Door Knocker and Letterplate both shown in Stainless Steel



## Contemporary Door Handles

Our range of modern, stainless steel and black handles will give your door a super-sleek look.



Lynx - Black Round Handle



Polaris - Black Square Handle



Antares - Stainless Steel Round Handle



Epsilon - Stainless Steel Square Handle



Waist high lock system with round escutcheon plate and Karcher lever handle.

## Contemporary Bar Pull Handles

Table showing options for possible handle combinations:

Outside	Inside
Bar Handle + escutcheon plate	Bar Handle + escutcheon plate
Bar Handle + escutcheon plate	Escutcheon + finger pull only
Bar Handle + escutcheon plate	Lever Handle
Escutcheon plate and finger pull only	Escutcheon plate and finger pull only
Lever Handle	Lever Handle



1800mm Bar Handle

1200mm Bar Handle

600mm Bar Handle

1500mm Square Bar Handle

1200mm Black Bar Handle

1200mm Black Square Bar Handle

1200mm Off-set Square Bar Handle

### PREMIUM Forged Black Door Furniture

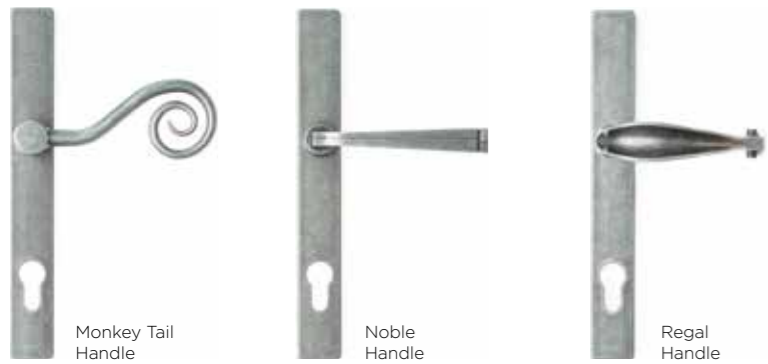


Push-in Letterplate



Door Pull

### PREMIUM Pewter Door Furniture



Push-in Letterplate



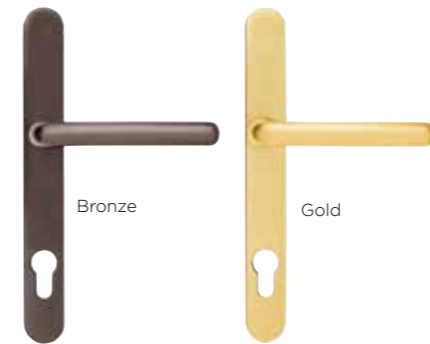
Door Pull

### Door Handles

Classic Lever Handles  
(also available with split handle)



Classic Lever Pad Handles  
(with split handle)



## Door Knockers

### Contemporary Knocker



Chrome    Antique Black    Black    Bronze



Gold    Satin Silver    White

### Scroll Knocker



Chrome    Antique Black    Black    Bronze



Gold    Satin Silver    White

### Slimline Knocker



Chrome    Antique Black    Black    Bronze



Gold    Satin Silver    White

### Urn Knocker

Also available with spyhole



Antique Black    Antique Black    Black    Bronze



Gold    Satin Silver    White

### Lionshead Knocker



Chrome    Antique Black    Black    Bronze



Gold    Satin Silver    White

## Door Letterplates and Accessories

### Letterplates



Chrome



Antique Black



Gold



Black



Satin Silver



Bronze



White

Escutcheon Plate  
Shown in stainless steel.  
Also available in brass.



Finger Pull  
Shown in stainless steel.  
Also available in black and brass.



Flag Hinge  
Flag hinges are available in Black, Bronze, White, Gold, Chrome, Brown and Satin Silver



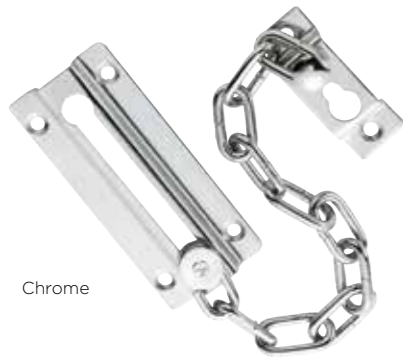
Security Chain



Gold

Numerals

Available in:  
Antique Black  
Black  
Bronze  
Chrome  
Gold  
Satin Silver



Chrome

Spyholes



Gold



Chrome



Black

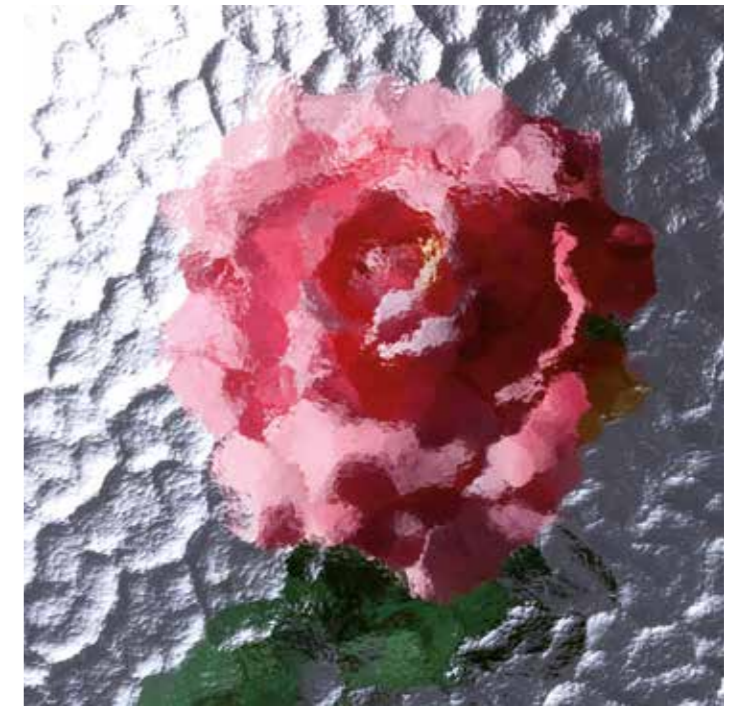
Euro Rebate Butt Hinge

Butt hinges are available in Gold, White, Chrome and Brown



BACKING GLASS OPTIONS

All of the door designs (except RG glass codes) featured throughout the brochure can be backed with a range of obscure glass to suit all requirements for energy efficiency, safety and privacy. This is our standard range but we can offer more styles upon request. Please note there may be an additional charge for non standard obscure glass patterns. There is no choice of backing glass for any of the RG glass code designs shown.



Minster



Flemish



Stippolyte



Cotswold



Contour



Satin

THRESHOLD OPTIONS



**MDS70 Threshold (25mm) Shown with ramp**  
Distance from bottom of door leaf to bottom of threshold 18mm



**uPVC Low Frame Threshold**  
Distance from bottom of door leaf to bottom of threshold 27mm



**uPVC Full Frame Threshold**  
Distance from bottom of door leaf to bottom of threshold 43mm

HALF AND QUARTER PANELS



**Half Panel Sizing**

APHP1

Min width - 585mm  
Min height - 688mm  
Max width - 900mm  
Max height - 914mm



**Quarter Panel Sizing**

APQP1

Min width - 264mm  
Min height - 688mm  
Max width - 540mm  
Max height - 900mm



**Flat Panel Sizing**

APFP1

Max width - 420mm  
Max height - 885mm



**T&G Panel Sizing**

APTPH

Max width - 1026mm  
Max height - 1089mm

SIDELIGHTS AND TOPLIGHTS

All decorative glass designs shown in doors with the RG code are available with a choice of sidelight and toplight options as shown. Due to the unique construction of the RG glass it is not possible to create matching sidelights or toplights.





MODO DOORS

Pages 94-97



**Kylemore AMD1** (Glass FT90)   **Somerton AMD2** (Glass ST61)   **Astwell AMD3** (Glass SB40)   **Dilston AMD4** (Glass FT66)   **Elsdon AMD5** (Glass SR30)   **Danby AMD6** (Glass SB35)   **Howard AMD7** (Glass FT70)



**Crom AMD8** (Glass FT72)   **Oakham AMD9** (Glass ST61)   **Skipsea AMD10** (Glass FT66)   **Cashel AMD11** (Glass FT66)   **Lismore AMD12** (Glass FT66)   **Halton AMD20** (Glass SB26)   **Gosford AMD21** (Glass SB26)

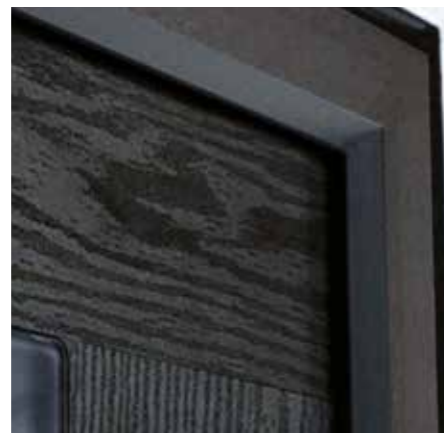
MODO FRAMES

Now with a choice of chamfered or sculptured frames.

Chamfered frame colours are only available in certain colours - contact the office for more details.

AMD20 & AMD21 are not available in White.

Handle options for Modos doors with a chamfered frame are the same waist high options as Silka.



Chamfered Frame



Sculptured Frame

SILKA DOORS

(All shown with Glass design SB27. SB27 clear visible border is 25mm)

Pages 82-93



**Goodrich SFG0**   **Goodrich SFG0 - With Lines**   **Wigmore SFG1**   **Caldwell SFG2**   **Caldwell SFG2 - With Lines**   **Walmer SFG3**



**Sutton SFG4**   **Ashton SFG5**   **Ashton SFG5 - With Lines**   **Turton SFG6**   **Wilton SFG7**   **Wilton SFG7 - With Lines**



**Hopton SFG8**   **Hopton SFG8 - With Lines**   **Hayton SFG20**

TRADITIONAL DOORS

APC1, APL1, APPI, APS1 solid styles are also available (not shown)



**Dunluce 1**  
APA1  
Page 28

**Dunluce 2**  
(Glass BO500)  
APA2  
Page 29

**Dunluce 3**  
(Glass LF549)  
APA3  
Page 29

**Chester 2**  
(Glass FT29)  
APC2

**Chester 3**  
(Glass BO501)  
APC3

**Longthorpe 1**  
(Glass FT31)  
APG1

**Longthorpe 2**  
(Glass FT31)  
APG3

**Portland**  
(Glass LF515)  
APL2  
Page 32



**Rowton 1**  
APM1  
Page 21

**Rowton 2**  
(Glass LF549)  
APM2  
Page 24

**Dunrobin 2**  
(Glass FT50)  
APP4

**Lambton**  
(Glass B07)  
APS2  
Page 38

**Wardour**  
(Glass LF545)  
APT2

**Corellia**  
(Glass SB27)  
APW2  
Page 40

**Hanwell 1**  
(Glass BO500)  
APY1

**Hanwell 2**  
(Glass BO500)  
APY2  
Page 36

CONTEMPORARY DOORS



**Mortham**  
APTS0  
Page 80

**Mawes**  
(Glass RG46)  
APTS2  
Page 70

**Kenmure**  
(Glass SB27)  
APTS4  
Page 77

**Allington**  
(Glass FT45)  
APTS5

**Beetham**  
(Glass RG18)  
APTS6  
Page 76

**Bewley**  
(Glass SB16)  
APTS10

**Clifton**  
(Glass SB20)  
APTS11

**Dalston**  
(Glass SB27)  
APTS12  
Page 72



**Wharton**  
(Glass RG62)  
APTS22

**Haddon**  
(Glass SB26)  
APTS23

**Wingfield**  
(Glass FT55)  
APTS24

**Bickleigh**  
(Glass RG23)  
APTS25  
Page 81

**Compton**  
(Clear Glass)  
APTS26  
Page 78

**Lyndford**  
(Glass RG20)  
APTS28

**Lulworth**  
(Glass RG56)  
APTS29  
Page 79

**Harewood**  
(Glass RG34)  
APTS30

ACCESSIBLE DOORS



**Banwell 1**  
ACDA1

**Banwell 2**  
(Glass RG18)  
ACDA2

**Banwell 3**  
(Glass RG36)  
ACDA3  
Page 30

**Toppin 2**  
(Glass RG34)  
ACDC2  
Page 53

**Toppin 3**  
(Glass RG30)  
ACDC3  
Page 52

**Toppin 5**  
ACDC5  
Page 53

**Kamino**  
(Glass RG4)  
ACDD2  
Page 46

**Mandalore**  
(Glass RG157)  
ACDD3  
Page 47



**Hoth**  
(Glass RG181)  
ACDG3  
Page 44

**Muncaster**  
ACDG4

**Marmion**  
(Glass RG23)  
ACDL2  
Page 54

**Downton**  
(Glass RG11)  
ACDL3  
Page 55

**Witton 1**  
ACDM1

**Witton 2**  
(Clear Glass)  
ACDM2  
Page 26

**Endor**  
(Glass RG159)  
ACDQ2  
Page 48

**Alderaan**  
(Glass SB27)  
ACDV2  
Page 50



**Brodie**  
(Glass SB18)  
APTS13

**Fraser**  
(Glass RG21)  
APTS16  
Page 74

**Bamburgh**  
(Clear Glass)  
APTS17

**Norris**  
(Glass SB27)  
APTS18

**Howgill**  
(Glass RG17)  
APTS19

**Kingsgate**  
(Glass RG1)  
APTS20

**Linstock**  
(Glass Dia. Lead)  
APTS21



**Walden**  
(Glass SB26)  
APTS31

**Clifden**  
(Glass RG23)  
APTS32

**Birr**  
(Glass SB26)  
APTS33  
Page 68

**Leslie**  
(Glass SB27)  
APTS34

**Calshot**  
(Glass FT43)  
APTS35

**Netley**  
(Glass FT82)  
APTS36

**Croft**  
(Glass FT81)  
APTS37

Handle and Letterbox position may vary from shown depending on the final door height and width.

Whilst care is taken to ensure that this brochure is as up-to-date and accurate as possible, no responsibility can be taken by New World for any errors or omissions contained herein. All measurements must be verified by surveyor on site.



# Build your dream door

...and see it on your own house!

Check out our online door builder at [doorbuilder.apeer.co.uk/](https://doorbuilder.apeer.co.uk/)



#morethanadoor



New World  
 Woodside Industrial Estate  
 Woodside Road  
 Ballymena, Co. Antrim  
 Northern Ireland BT42 4HX

T: 0345 672 9333  
 sales@apeer.co.uk  
 T: 048 2563 2200 (ROI)

[apeer.co.uk](https://apeer.co.uk)

Apeer is a registered brand of New World Developments Ltd. New World reserves the right to make alterations to any of the featured products without prior notice. March 2024